

Product datasheet for TP309476

Collagen VI (COL6A2) (NM_001849) Human Recombinant Protein

Product data:

Product Type: Recombinant Proteins
Description: Recombinant protein of human collagen, type VI, alpha 2 (COL6A2), transcript variant 2C2, 20 µg
Species: Human
Expression Host: HEK293T
Expression cDNA Clone or AA Sequence: >RC209476 protein sequence
Red=Cloning site **Green**=Tags(s)

MLQGTCSVLLWLGILGAIQAQQQEVISPDTERNNNCPEKTDCEPIHVYFVLDTSSEVTMQSPTDILLFHM
 KQFVPQFISQLQNEFYLDQVALSWRYGGLHFSDQVEVFSPPGSDRASFIKNLQGISSFRRGTFTDCALAN
 MTEQIRQDRSKGTVHFAVITDGHVTGSPCGGIKQAERAREEGIRLFAVAPNQLKEQGLRDIASPTHE
 LYRNDYATMLPDSTEIDQDTINRIIKVMKHEAYGECYKVSLEIPGPSGPKGYRGQKGAKNMGEPGEPG
 QKGRQGDPIEGPIGFPKGVPGFKGEKGEFGADGRKGAPLAGKNGTDGQKGLGRIGPPGCKGDPGN
 RGPDPGYPGEAGSPGERGDQGGKGDPRPGRGPPGEIGAKGSKGYQGNNAGSPGVKGAKGPPGPRGPK
 GEPGRRGDPGKSGSDGPKGEKGDPEGPRGLAGEVGNKGAKGDRGLPGPRGPQALGEPGKQGSRG
 DPGDAGPRGDSGQPGPKGDPGRPGFSYPGRGAPGEKGEPPRGPPEGGRGDFLKGEPGRKGEKGEPADP
 GPPGEPGPRGPRGVPGEPEGPPGDPGLTECDVMTYVRETCCDCCKRCGALDVVFVIDSSESIGYTN
 FTLEKNFVINVNRLGAIKDPKSETGTRVGVVQYSHEGTFEAIQLDDERIDSLSSFKEAVKNLEWIAGG
 TWTPSALKFAYDRLIKESRRQKTRVFAVITDGRHDPDRDDLNLRALCDRDVTVAIGIDMFHEKHESE
 NLYSIACDKPQQVRNMTLFSDLVAEKFIDDMEDVLCPPDQIVCPDLPCQTELSVAQCTQRPVDIVFLLDG
 SERLGEQNFHKARRFVEQVARRLTLARRDDPLNARVALLQFGGPEQQVAFPLSHNLTAIHEALETQY
 LNSFSHVAGVHAINAIVRSRGGARRHAELSFVFLTDGVTGNDLHESAHSRMRKQNVVPTVLALGSDV
 DMDVLTTLTSLGDRAAVFHEKDYDSLAPGFFDRFIRWIC

SGPTRTRPLEQKLISEEDLAANDILDYKDDDDKV

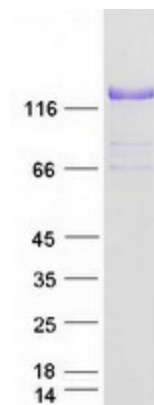
Tag: C-Myc/DDK
Predicted MW: 106.5 kDa
Concentration: >0.05 µg/µL as determined by microplate BCA method
Purity: > 80% as determined by SDS-PAGE and Coomassie blue staining
Buffer: 25 mM Tris-HCl, 100 mM glycine, pH 7.3, 10% glycerol



[View online »](#)

Preparation:	Recombinant protein was captured through anti-DDK affinity column followed by conventional chromatography steps.
Note:	For testing in cell culture applications, please filter before use. Note that you may experience some loss of protein during the filtration process.
Storage:	Store at -80°C.
Stability:	Stable for 12 months from the date of receipt of the product under proper storage and handling conditions. Avoid repeated freeze-thaw cycles.
RefSeq:	NP_001840
Locus ID:	1292
UniProt ID:	P12110 , A0A384MDP3
RefSeq Size:	3455
Cytogenetics:	21q22.3
RefSeq ORF:	3057
Synonyms:	BTHLM1; PP3610; UCMD1
Summary:	This gene encodes one of the three alpha chains of type VI collagen, a beaded filament collagen found in most connective tissues. The product of this gene contains several domains similar to von Willebrand Factor type A domains. These domains have been shown to bind extracellular matrix proteins, an interaction that explains the importance of this collagen in organizing matrix components. Mutations in this gene are associated with Bethlem myopathy and Ullrich scleroatonic muscular dystrophy. Three transcript variants have been identified for this gene. [provided by RefSeq, Jul 2008]
Protein Families:	Secreted Protein
Protein Pathways:	ECM-receptor interaction, Focal adhesion

Product images:



Coomassie blue staining of purified COL6A2 protein (Cat# TP309476). The protein was produced from HEK293T cells transfected with COL6A2 cDNA clone (Cat# [RC209476]) using MegaTran 2.0 (Cat# [TT210002]).