

Product datasheet for **TP309471**

ATPBD4 (DPH6) (NM_080650) Human Recombinant Protein

Product data:

Product Type:	Recombinant Proteins
Description:	Recombinant protein of human ATP binding domain 4 (ATPBD4), transcript variant 1, 20 µg
Species:	Human
Expression Host:	HEK293T
Expression cDNA Clone or AA Sequence:	>RC209471 protein sequence Red =Cloning site Green =Tags(s)

MRVAALISGGKDCSCYNMMQCIAAGHQIVALANLRPAENQVGSDELDSYMYQTVGHHAILDYAEAMALPLY
RRTIRGRSLDTRQVYTKCEGDEVEDLYELLKLVKEKEEVEGISVGAILSDYQRIRVENVCKRLNLQPLAY
LWQRNQEDLLREMISSNIQAMIIKVAALGLDPDKHLGKTLQMEPYLIELSKKYGVHVCGEYETFTL
DCPLFKKKIIVDSSEVIHSADAFAPVAYLRFLELHLEDKVSSVDPDNYRTSNYIYNF

TRTRPLEQKLISEEDLAANDILDYKDDDDKV

Tag:	C-Myc/DDK
Predicted MW:	30.1 kDa
Concentration:	>0.05 µg/µL as determined by microplate BCA method
Purity:	> 80% as determined by SDS-PAGE and Coomassie blue staining
Buffer:	25 mM Tris-HCl, 100 mM glycine, pH 7.3, 10% glycerol
Preparation:	Recombinant protein was captured through anti-DDK affinity column followed by conventional chromatography steps.
Note:	For testing in cell culture applications, please filter before use. Note that you may experience some loss of protein during the filtration process.
Storage:	Store at -80°C.
Stability:	Stable for 12 months from the date of receipt of the product under proper storage and handling conditions. Avoid repeated freeze-thaw cycles.
RefSeq:	NP_542381
Locus ID:	89978
UniProt ID:	Q7L8W6



[View online >](#)

RefSeq Size: 2139

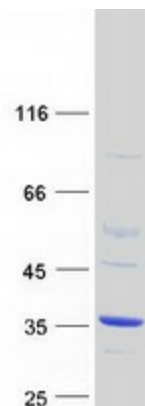
Cytogenetics: 15q14

RefSeq ORF: 801

Synonyms: ATPBD4

Summary: Amidase that catalyzes the last step of diphthamide biosynthesis using ammonium and ATP. Diphthamide biosynthesis consists in the conversion of an L-histidine residue in the translation elongation factor (EEF2) to diphthamide (By similarity).[UniProtKB/Swiss-Prot Function]

Product images:



Coomassie blue staining of purified DPH6 protein (Cat# TP309471). The protein was produced from HEK293T cells transfected with DPH6 cDNA clone (Cat# [RC209471]) using MegaTran 2.0 (Cat# [TT210002]).