

Product datasheet for **TP309454M**

DGLUCY (NM_024952) Human Recombinant Protein

Product data:

Product Type:	Recombinant Proteins
Description:	Recombinant protein of human chromosome 14 open reading frame 159 (C14orf159), transcript variant 3, 100 µg
Species:	Human
Expression Host:	HEK293T
Expression cDNA Clone or AA Sequence:	>RC209454 protein sequence Red =Cloning site Green =Tags(s)

MPFTLHLRSRLPSAIRSLILQKKPNIRNTSSMAGELRPASLVWLPRLAPAFERFCQVNTGPLPLLGQSE
PEKWMLPPQGAISSETRMGHPQFWKYEFGACTGSLASLEQYSEQLKDMVAFFLGCSFSLEEALAKAGLPRR
DPAGHSQTTVPCVTHAGFCCPLVVTMRPIPKDKLEGLVRACCSLGGEQGPVHMGDPELLGIKELSKPAY
GDAMVCPPGEVPVFWPSPLTSLGAVSSCETPLAFASIPGCTVMTDLKDAKAPPGLCTPERIPEVHHISQD
PLHYSIASVSASQKIRELESMIGIDPGNRGIGHLLCKDELLKASLSLSHARSVLITTFPPTHFNHEPPEE
TDGPPGAVALVAFLQALEKEVAIIVDQRAWNLHQKIVEDAVEQGVLTQIPILTYQGGSVAAQAFLCKN
GDPQTPRFDHLVAIERAGRAADGNYYNARKMNIKHLVDPIDDLFLAAKKIPGISSTGVGDGGNELGMGKV
KEAVRRHIRHGDVIACDVEADFAVIAGVSNWGGYALACALYILYSCAVHSQYLKAVGSPRAPGDQAWTQ
ALPSVIKEEKMLGILVQHKVRSVSGVIVGMEVDGLPFHNTHAEMIQLVDVTTAQV

TRTRPLEQKLISEEDLAANDILDYKDDDDKV

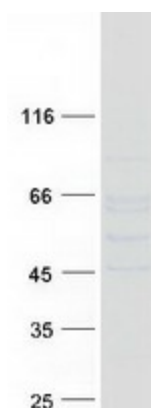
Tag:	C-Myc/DDK
Predicted MW:	66.3 kDa
Concentration:	>0.05 µg/µL as determined by microplate BCA method
Purity:	> 80% as determined by SDS-PAGE and Coomassie blue staining
Buffer:	25 mM Tris-HCl, 100 mM glycine, pH 7.3, 10% glycerol
Preparation:	Recombinant protein was captured through anti-DDK affinity column followed by conventional chromatography steps.
Note:	For testing in cell culture applications, please filter before use. Note that you may experience some loss of protein during the filtration process.
Storage:	Store at -80°C.



[View online »](#)

Stability:	Stable for 12 months from the date of receipt of the product under proper storage and handling conditions. Avoid repeated freeze-thaw cycles.
RefSeq:	NP_079228
Locus ID:	80017
UniProt ID:	Q7Z3D6
RefSeq Size:	3011
Cytogenetics:	14q32.11
RefSeq ORF:	1848
Synonyms:	C14orf159
Summary:	D-glutamate cyclase that converts D-glutamate to 5-oxo-D-proline.[UniProtKB/Swiss-Prot Function]

Product images:



Coomassie blue staining of purified DGLUCY protein (Cat# [TP309454]). The protein was produced from HEK293T cells transfected with DGLUCY cDNA clone (Cat# [RC209454]) using MegaTran 2.0 (Cat# [TT210002]).