

## Product datasheet for **TP309446L**

### LYPLA3 (PLA2G15) (NM\_012320) Human Recombinant Protein

#### Product data:

Product Type:	Recombinant Proteins
Description:	Recombinant protein of human phospholipase A2, group XV (PLA2G15), 1 mg
Species:	Human
Expression Host:	HEK293T
Expression cDNA	>RC209446 protein sequence
Clone or AA Sequence:	Red=Cloning site Green=Tags(s)

MGLHLRPYRVGLLPDGLLFLLLLLMLLADPALPAGRHPVVLVPGDLGNQLEAKLDKPTVVHYLCSKTE  
SYFTIWLNLELLLPVIIDCWIDNIRLVYNKTSRATQFPDGDVDRVPGFGKTFSLFLDPSKSSVGSYFHT  
MVESLVGWGYTRGEDVRGAPYDWRRAPNENGPYFLALREMIEMYQLYGGPVVLAHSMGNMYTLYFLQR  
QPQAWKDKYIRAFVSLGAPWGGVAKTLRVLASGDNNRIPVIGPLKIREQQRSAVSTSWLLPYNWTWSPEK  
VFVQTPTINYTLRDYRKFQDIGFEDGWLMRQDTEGLVEATMPPGVQLHCLYGTGVPPTDSFYYESFPDR  
DPKICFGDGDGTVNLKSALQCQAWQSRQEHQVLLQELPGSEHIEMLANATTLAYLKRVLG

TRTRPLEQKLISEEDLAANDILDYKDDDDKV

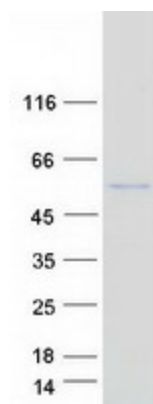
Tag:	C-Myc/DDK
Predicted MW:	46.5 kDa
Concentration:	>0.05 µg/µL as determined by microplate BCA method
Purity:	> 80% as determined by SDS-PAGE and Coomassie blue staining
Buffer:	25 mM Tris-HCl, 100 mM glycine, pH 7.3, 10% glycerol
Preparation:	Recombinant protein was captured through anti-DDK affinity column followed by conventional chromatography steps.
Note:	For testing in cell culture applications, please filter before use. Note that you may experience some loss of protein during the filtration process.
Storage:	Store at -80°C.
Stability:	Stable for 12 months from the date of receipt of the product under proper storage and handling conditions. Avoid repeated freeze-thaw cycles.
RefSeq:	<a href="#">NP_036452</a>
Locus ID:	23659



[View online »](#)

UniProt ID:	<a href="#">Q8NCC3</a>
RefSeq Size:	2764
Cytogenetics:	16q22.1
RefSeq ORF:	1236
Synonyms:	ACS; GXVPLA2; LLPL; LPLA2; LYPLA3
Summary:	Lysophospholipases are enzymes that act on biological membranes to regulate the multifunctional lysophospholipids. The protein encoded by this gene hydrolyzes lysophosphatidylcholine to glycerophosphorylcholine and a free fatty acid. This enzyme is present in the plasma and thought to be associated with high-density lipoprotein. A later paper contradicts the function of this gene. It demonstrates that this gene encodes a lysosomal enzyme instead of a lysophospholipase and has both calcium-independent phospholipase A2 and transacylase activities. [provided by RefSeq, Jul 2008]
Protein Families:	Secreted Protein
Protein Pathways:	Glycerophospholipid metabolism, Lysosome

### Product images:



Coomassie blue staining of purified PLA2G15 protein (Cat# [TP309446]). The protein was produced from HEK293T cells transfected with PLA2G15 cDNA clone (Cat# [RC209446]) using MegaTran 2.0 (Cat# [TT210002]).