

Product datasheet for **TP309446**

LYPLA3 (PLA2G15) (NM_012320) Human Recombinant Protein

Product data:

Product Type: Recombinant Proteins

Description: Recombinant protein of human phospholipase A2, group XV (PLA2G15), 20 µg

Species: Human

Expression Host: HEK293T

Expression cDNA >RC209446 protein sequence

Clone or AA Sequence: **Red**=Cloning site **Green**=Tags(s)

MGLHLRPYRVGLLPDGLLFLLLLLMLLADPALPAGRHPVVLVPGDLGNQLEAKLDKPTVVHYLCSKTE
SYFTIWLNLELLLPVIIDCWIDNIRLVYNKTSRATQFPDGVDRVPGFGKTFSLFLDPSKSSVGSYFHT
MVESLVGWGYTRGEDVRGAPYDWRRAPNENGPYFLALREMIEMYQLYGGPVVLAHSMGNMYTLYFLQR
QPQAWKDKYIRAFVSLGAPWGGVAKTLRVLASGDNRRIPVIGPLKIREQQRSAVSTSWLLPYNYTWSPEK
VFVQTPTINYTLRDYRKFQDIGFEDGWLMRQDTEGLVEATMPPGVQLHCLYGTGVPTPDSFYYESFPDR
DPKICFGDGDGTVNLKSALQCQAWQSRQEHQVLLQELPGSEHIEMLANATTLAYLKRVLG

TRTRPLEQKLISEEDLAANDILDYKDDDDKV

Tag: C-Myc/DDK

Predicted MW: 46.5 kDa

Concentration: >0.05 µg/µL as determined by microplate BCA method

Purity: > 80% as determined by SDS-PAGE and Coomassie blue staining

Buffer: 25 mM Tris-HCl, 100 mM glycine, pH 7.3, 10% glycerol

Preparation: Recombinant protein was captured through anti-DDK affinity column followed by conventional chromatography steps.

Note: For testing in cell culture applications, please filter before use. Note that you may experience some loss of protein during the filtration process.

Storage: Store at -80°C.

Stability: Stable for 12 months from the date of receipt of the product under proper storage and handling conditions. Avoid repeated freeze-thaw cycles.

RefSeq: [NP_036452](#)

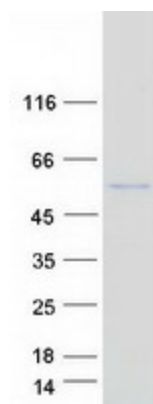
Locus ID: 23659



[View online »](#)

| | |
|-------------------|--|
| UniProt ID: | Q8NCC3 |
| RefSeq Size: | 2764 |
| Cytogenetics: | 16q22.1 |
| RefSeq ORF: | 1236 |
| Synonyms: | ACS; GXVPLA2; LLPL; LPLA2; LYPLA3 |
| Summary: | Lysophospholipases are enzymes that act on biological membranes to regulate the multifunctional lysophospholipids. The protein encoded by this gene hydrolyzes lysophosphatidylcholine to glycerophosphorylcholine and a free fatty acid. This enzyme is present in the plasma and thought to be associated with high-density lipoprotein. A later paper contradicts the function of this gene. It demonstrates that this gene encodes a lysosomal enzyme instead of a lysophospholipase and has both calcium-independent phospholipase A2 and transacylase activities. [provided by RefSeq, Jul 2008] |
| Protein Families: | Secreted Protein |
| Protein Pathways: | Glycerophospholipid metabolism, Lysosome |

Product images:



Coomassie blue staining of purified PLA2G15 protein (Cat# TP309446). The protein was produced from HEK293T cells transfected with PLA2G15 cDNA clone (Cat# [RC209446]) using MegaTran 2.0 (Cat# [TT210002]).