

## Product datasheet for TP309427

### KLC3 (NM\_177417) Human Recombinant Protein

#### Product data:

**Product Type:** Recombinant Proteins  
**Description:** Recombinant protein of human kinesin light chain 3 (KLC3), 20 µg  
**Species:** Human  
**Expression Host:** HEK293T  
**Expression cDNA Clone or AA Sequence:** >RC209427 protein sequence  
**Red**=Cloning site **Green**=Tags(s)

MSVQVAAPGSAGLGPERLSPEELVRQTRQVWQGLEALRAEHHGLAGHLAEALAGQGPAAGLEMLEEKQQV  
VSHSLEAIELGLGEAQVLLALSAHVGAEAEKQRLRSQARRLAQENVWLRREELEETQRRLRASEESVAQL  
EEEKRHLFLGQLRQYDPPAESQQSESPRRDLSASLFPSEEEERKGPEAAGAAAAQQGGYEIPARLRTL  
HNLVIQYAGQGRYEVAVPLCRQALEDLERSGGHCHPDVATMLNILALVYRDQNKYKEATDLLHDALQIRE  
QTLGPEHPAVAATLNNLAVLYGKRGYREAEPQCRALEIREKVLGADHPDVAQLNNLALLCQNQKFE  
DVERHYARALSIYEALGGPHDPNVAKTKNNLASAYLKQNKYQQAEEELYKEILHKEDLPAPLGAPNTGTAG  
DAEQALRRSSSLKIRESSIRRGSEKLVSRLRGEEAAGAAGMKRAMSLNTLNVDPAPRPGTQFPSWHLDKA  
PRTLSASTQDLSPH

**TR**TRPLE**QKLISEEDLAANDILDYKDDDDKV**

**Tag:** C-Myc/DDK  
**Predicted MW:** 55.2 kDa  
**Concentration:** >0.05 µg/µL as determined by microplate BCA method  
**Purity:** > 80% as determined by SDS-PAGE and Coomassie blue staining  
**Buffer:** 25 mM Tris-HCl, 100 mM glycine, pH 7.3, 10% glycerol  
**Preparation:** Recombinant protein was captured through anti-DDK affinity column followed by conventional chromatography steps.  
**Note:** For testing in cell culture applications, please filter before use. Note that you may experience some loss of protein during the filtration process.  
**Storage:** Store at -80°C.  
**Stability:** Stable for 12 months from the date of receipt of the product under proper storage and handling conditions. Avoid repeated freeze-thaw cycles.



[View online »](#)

RefSeq: [NP\\_803136](#)

Locus ID: 147700

UniProt ID: [Q6P597](#)

RefSeq Size: 1793

Cytogenetics: 19q13.32

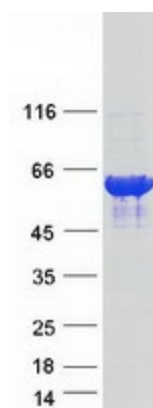
RefSeq ORF: 1512

Synonyms: KLC2; KLC2L; KLCt; KNS2B

**Summary:** This gene encodes a member of the kinesin light chain gene family. Kinesins are molecular motors involved in the transport of cargo along microtubules, and are composed of two kinesin heavy chain (KHC) and two kinesin light chain (KLC) molecules. KLCs are thought to typically be involved in binding cargo and regulating kinesin activity. In the rat, a protein similar to this gene product is expressed in post-meiotic spermatids, where it associates with structural components of sperm tails and mitochondria. [provided by RefSeq, Jul 2008]

**Protein Families:** Druggable Genome

### Product images:



Coomassie blue staining of purified KLC3 protein (Cat# TP309427). The protein was produced from HEK293T cells transfected with KLC3 cDNA clone (Cat# [RC209427]) using MegaTran 2.0 (Cat# [TT210002]).