

## Product datasheet for **TP309413**

### EXOC3 (NM\_007277) Human Recombinant Protein

#### Product data:

Product Type:	Recombinant Proteins
Description:	Recombinant protein of human exocyst complex component 3 (EXOC3), 20 µg
Species:	Human
Expression Host:	HEK293T
Expression cDNA Clone or AA Sequence:	>RC209413 protein sequence Red=Cloning site Green=Tags(s)

MKETDREAVATAVQRVAGMLQRPDQLDKVEQYRRREARKKASVEARLKAAIQSQLDGVRTGLSQLHNALN  
DVKDIQQSLADVSKDWRQSINTIESLKDVKDAVWQHSQLAAAVENLKNIFSVPEIVRETQDLIEQGALLQ  
AHRKLMGLECSRDLMEYQYRMDSGNTRDMTLIHGYFGSTQGLSDELAKQLWMLVLRSLVTVRRDPTLLV  
SVVRIIEREEKIDRRILDRKKQTGFVPPGRPKNWKEKMFILERTVTTRIEGTQADTRESDKMWLVRHLE  
IIRKYVLDDLIVAKNLMVQCFFPHYEIFKNLLNMYHQALSTRMQDLASEDLEANEIVSLLTWWLNTYTST  
EMMRNVELAPEVDVGTLEPLLSPHVSELLDTYMSTLTSNIIAWLRKALETDKKDWVKETEPEADQDGY  
QTTLPAIVFQMFQNLQVAAQISEDLKTQVLLVCLQQMNSFLSRYKDEAQLYKEEHLNRNRPHPHCYVQYM  
IAIINNCQTFKESIVSLKRKYLKNEVEEGVSPSQPSMDGILDIAIAKEGCSGLLEEVFLDLEQHLNELMTK  
KWLLGSAVNDIICVTVEDYFNDFAKIKKPYKKRMTAEAHRRVVVEYLRAVMQKRISFRSPEERKEGAEMK  
VREAEQLRFLFRKLASGFGEVDGYCDTIVAVAIEVIKLTDPSSLLYLEVSTLVSKYPDIRDDHIGALLAVR  
GDASRDMKQTIMETLEQGPAQASPSYVPLFKDIVPSSLNVAKLLK

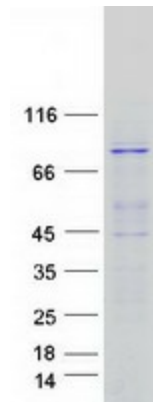
SGPTRTRPLEQKLISEEDLAANDILDYKDDDDKV

Tag:	C-Myc/DDK
Predicted MW:	85.4 kDa
Concentration:	>0.05 µg/µL as determined by microplate BCA method
Purity:	> 80% as determined by SDS-PAGE and Coomassie blue staining
Buffer:	25 mM Tris-HCl, 100 mM glycine, pH 7.3, 10% glycerol
Preparation:	Recombinant protein was captured through anti-DDK affinity column followed by conventional chromatography steps.
Note:	For testing in cell culture applications, please filter before use. Note that you may experience some loss of protein during the filtration process.
Storage:	Store at -80°C.



[View online »](#)

<b>Stability:</b>	Stable for 12 months from the date of receipt of the product under proper storage and handling conditions. Avoid repeated freeze-thaw cycles.
<b>RefSeq:</b>	<a href="#">NP_009208</a>
<b>Locus ID:</b>	11336
<b>UniProt ID:</b>	<a href="#">O60645</a>
<b>RefSeq Size:</b>	2774
<b>Cytogenetics:</b>	5p15.33
<b>RefSeq ORF:</b>	2235
<b>Synonyms:</b>	SEC6; SEC6L1; Sec6p
<b>Summary:</b>	The protein encoded by this gene is a component of the exocyst complex, a multiple protein complex essential for targeting exocytic vesicles to specific docking sites on the plasma membrane. Though best characterized in yeast, the component proteins and functions of exocyst complex have been demonstrated to be highly conserved in higher eukaryotes. At least eight components of the exocyst complex, including this protein, are found to interact with the actin cytoskeletal remodeling and vesicle transport machinery. The complex is also essential for the biogenesis of epithelial cell surface polarity. [provided by RefSeq, Jul 2008]
<b>Protein Pathways:</b>	Tight junction

**Product images:**

Coomassie blue staining of purified EXOC3 protein (Cat# TP309413). The protein was produced from HEK293T cells transfected with EXOC3 cDNA clone (Cat# [RC209413]) using MegaTran 2.0 (Cat# [TT210002]).