

Product datasheet for **TP309406L**

Selenophosphate synthetase 1 (SEPHS1) (NM_012247) Human Recombinant Protein

Product data:

Product Type:	Recombinant Proteins
Description:	Recombinant protein of human selenophosphate synthetase 1 (SEPHS1), 1 mg
Species:	Human
Expression Host:	HEK293T
Expression cDNA Clone or AA Sequence:	>RC209406 protein sequence Red =Cloning site Green =Tags(s)

MSTRESFNPESEYELDKSFRRLTRFTELKGTGCKVPQDVLQKLLESQENHFQEDEQFLGAVMPRLGIGMDT
CVIPLRHGGLSLVQTTDYIPIVDDPYMMGRIACANVLSPLYAMGVTECDNMLMLLGVSNKMTDRERDKV
MPLIIQGFKDAEEAGTSVTGGQTVLNPWIVLGGVATTVCQPNEFIMPDNAVPGDVLVLTKPLGTQVAVA
VHQWLDIPEKWNKIKLVVTQEDVELAYQEAMMNMARLNRTAAGLMHTFNAAHAATDITGFGILGHAQNLAQ
QQRNEVSFVIHNLPLAKMAAVSKACGNMFLMHGTCPETSGLLIICLPREQAARFCAEIKSPKYGEGHQ
AWIIGIVEKGNRTARIIDKPRIIEVAPQVATQNVNPTPGATS

TRTRPLEQKLISEEDLAANDILDYKDDDDKV

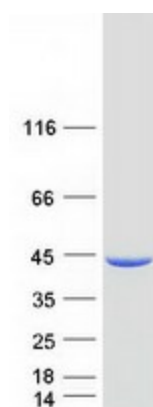
Tag:	C-Myc/DDK
Predicted MW:	42.7 kDa
Concentration:	>0.05 µg/µL as determined by microplate BCA method
Purity:	> 80% as determined by SDS-PAGE and Coomassie blue staining
Buffer:	25 mM Tris-HCl, 100 mM glycine, pH 7.3, 10% glycerol
Preparation:	Recombinant protein was captured through anti-DDK affinity column followed by conventional chromatography steps.
Note:	For testing in cell culture applications, please filter before use. Note that you may experience some loss of protein during the filtration process.
Storage:	Store at -80°C.
Stability:	Stable for 12 months from the date of receipt of the product under proper storage and handling conditions. Avoid repeated freeze-thaw cycles.
RefSeq:	NP_036379
Locus ID:	22929



[View online »](#)

UniProt ID:	P49903
RefSeq Size:	3275
Cytogenetics:	10p13
RefSeq ORF:	1176
Synonyms:	SELD; SPS; SPS1
Summary:	This gene encodes an enzyme that synthesizes selenophosphate from selenide and ATP. Selenophosphate is the selenium donor used to synthesize selenocysteine, which is co-translationally incorporated into selenoproteins at in-frame UGA codons. [provided by RefSeq, Sep 2010]
Protein Families:	Stem cell - Pluripotency
Protein Pathways:	Metabolic pathways, Selenoamino acid metabolism

Product images:



Coomassie blue staining of purified SEPHS1 protein (Cat# [TP309406]). The protein was produced from HEK293T cells transfected with SEPHS1 cDNA clone (Cat# [RC209406]) using MegaTran 2.0 (Cat# [TT210002]).