

## Product datasheet for TP309394L

### CPXM (CPXM1) (NM\_019609) Human Recombinant Protein

#### Product data:

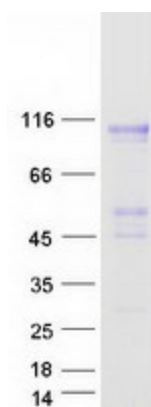
Product Type:	Recombinant Proteins
Description:	Recombinant protein of human carboxypeptidase X (M14 family), member 1 (CPXM1), 1 mg
Species:	Human
Expression Host:	HEK293T
Expression cDNA Clone or AA Sequence:	>RC209394 protein sequence <b>Red</b> =Cloning site <b>Green</b> =Tags(s)
	<p>MWGLLLALAAFAPAVGPALGAPRNSVLGLAQPGETTKVPLTPALHSSPAQPPAETANGTSEQHVRIRVIK            KKKVIMKKRKKLTLTRPTPLVTAGPLVTPTPAGTLDPAEKQETGCPPLGLESRLVSDSRLEASSSQSFG            L GPHRGRNLNIQSGLEDGDLYDGAWCAEEQDADPWFQVDAGHPTRFSGVITQGRNSVWRYDWVTSYKVQFSN            DSRTWWGSRNHSSGMDAVFPANSDPETPVLNLLPEPQVARFIRLLPQTLWQGGAPCLRAEILACPVSDPN            DLFLEAPASGSSDPLDFQHNNYKAMRKLKQVQECPNITRIYSIGKSYQGLKLYVMEMSDKPGHEHELGE            PEVRYVAGMHGNEALGRELLLLMQFLCHEFLRGNPRVTRLLSEMRIHLLPSMNPDGYEIAYHRGSELV            G WAEGRWNNQSIDLNHNFADLNTPLWEAQDDGKVPHIVPNHHLPLPTYTLPNATVAPETRAVIKWMKRIP            FVLSANLHGGEVVSYPFDMTRTPWAARELTPTPDDAVFRWLSTVYAGSNLAMQDTSRRPCHSQDFSVH            G NIINGADWHTVPGSMNDFSYLHTNCFEVTVELSCDKFPHENELPQEWENNKDALLTYLEQVRMGIAGVVR            DKDTELGIAVAIVDGINHDVTTAWGGDYWRLLTPGDYMTASAEGYHSVTRNCRVTFEEGPFPCNFV            L TKTPKQRLRELLAAGAKVPPDLRRRLRLRGQKD</p> <p><b>TRTRPLEQKLISEEDLAANDILDYKDDDDKV</b></p>
Tag:	C-Myc/DDK
Predicted MW:	79.7 kDa
Concentration:	>0.05 µg/µL as determined by microplate BCA method
Purity:	> 80% as determined by SDS-PAGE and Coomassie blue staining
Buffer:	25 mM Tris-HCl, 100 mM glycine, pH 7.3, 10% glycerol
Preparation:	Recombinant protein was captured through anti-DDK affinity column followed by conventional chromatography steps.
Note:	For testing in cell culture applications, please filter before use. Note that you may experience some loss of protein during the filtration process.
Storage:	Store at -80°C.



[View online »](#)

<b>Stability:</b>	Stable for 12 months from the date of receipt of the product under proper storage and handling conditions. Avoid repeated freeze-thaw cycles.
<b>RefSeq:</b>	<a href="#">NP_062555</a>
<b>Locus ID:</b>	56265
<b>UniProt ID:</b>	<a href="#">Q96SM3</a>
<b>RefSeq Size:</b>	2409
<b>Cytogenetics:</b>	20p13
<b>RefSeq ORF:</b>	2202
<b>Synonyms:</b>	CPX1; CPXM
<b>Summary:</b>	This gene likely encodes a member of the carboxypeptidase family of proteins. Cloning of a comparable locus in mouse indicates that the encoded protein contains a discoidin domain and a carboxypeptidase domain, but the protein appears to lack residues necessary for carboxypeptidase activity.[provided by RefSeq, May 2010]
<b>Protein Families:</b>	Druggable Genome, Protease, Secreted Protein

### Product images:



Coomassie blue staining of purified CPXM1 protein (Cat# [TP309394]). The protein was produced from HEK293T cells transfected with CPXM1 cDNA clone (Cat# [RC209394]) using MegaTran 2.0 (Cat# [TT210002]).