

## Product datasheet for **TP309393M**

### Pyrophosphatase 1 (PPA1) (NM\_021129) Human Recombinant Protein

#### Product data:

Product Type:	Recombinant Proteins
Description:	Recombinant protein of human pyrophosphatase (inorganic) 1 (PPA1), 100 µg
Species:	Human
Expression Host:	HEK293T
Expression cDNA Clone or AA Sequence:	>RC209393 protein sequence <b>Red</b> =Cloning site <b>Green</b> =Tags(s)

MSGFSTEERAAPFSLEYRVFLKNEKGQYISPFHDIPIYADKDV FHMVVEVPRWSNAKMEIATKDPLNPIK  
QDVKKGKRLRYVANLFPYKGYIWNYGAIPQTWEDPGHNDKHTGCCGDNDPIDVCEIGSKVCARGEIIGVKV  
LGILAMIDEGETDWKVIAINVDDPDAANYNDINDVKRLKPGYLEATVDWFRRYKVPDGPENEFNAEF  
KDKDFAIDIIKSTHDHWKALVTKKTNGKGISCMNTTLESFPKCDPDAARAIVDALPPPCESACTVPTDV  
DKWFHHQKN

**TRTRPLEQKLISEEDLAANDILDYKDDDDKV**

Tag:	C-Myc/DDK
Predicted MW:	32.5 kDa
Concentration:	>0.05 µg/µL as determined by microplate BCA method
Purity:	> 80% as determined by SDS-PAGE and Coomassie blue staining
Buffer:	25 mM Tris-HCl, 100 mM glycine, pH 7.3, 10% glycerol
Preparation:	Recombinant protein was captured through anti-DDK affinity column followed by conventional chromatography steps.
Note:	For testing in cell culture applications, please filter before use. Note that you may experience some loss of protein during the filtration process.
Storage:	Store at -80°C.
Stability:	Stable for 12 months from the date of receipt of the product under proper storage and handling conditions. Avoid repeated freeze-thaw cycles.
RefSeq:	<u><a href="#">NP_066952</a></u>
Locus ID:	5464



[View online »](#)

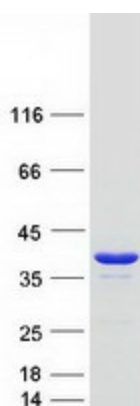
UniProt ID: [Q15181](#), [V9HWB5](#)  
RefSeq Size: 1316  
Cytogenetics: 10q22.1  
RefSeq ORF: 867  
Synonyms: HEL-S-66p; IOPPP; PP; PP1; SID6-8061

**Summary:** The protein encoded by this gene is a member of the inorganic pyrophosphatase (PPase) family. PPases catalyze the hydrolysis of pyrophosphate to inorganic phosphate, which is important for the phosphate metabolism of cells. Studies of a similar protein in bovine suggested a cytoplasmic localization of this enzyme. [provided by RefSeq, Jul 2008]

**Protein Families:** ES Cell Differentiation/IPS

**Protein Pathways:** Oxidative phosphorylation

### Product images:



Coomassie blue staining of purified PPA1 protein (Cat# [TP309393]). The protein was produced from HEK293T cells transfected with PPA1 cDNA clone (Cat# [RC209393]) using MegaTran 2.0 (Cat# [TT210002]).