

Product datasheet for **TP309389M**

LCN6 (NM_198946) Human Recombinant Protein

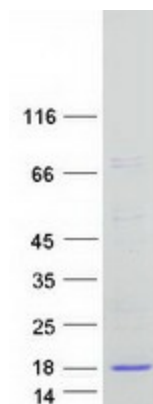
Product data:

Product Type:	Recombinant Proteins
Description:	Recombinant protein of human lipocalin 6 (LCN6), 100 µg
Species:	Human
Expression Host:	HEK293T
Expression cDNA Clone or AA Sequence:	>RC209389 protein sequence Red =Cloning site Green =Tags(s) MGGLLLAFLALVSPRAQAVWLGRLDPEQLLGPWYVLAVASREKGFAMEKDMKNVVGWVTLTPENNL R TLSSQHGLGGCDQSVMDLIKRN SGWVFENPSIGVLELWVLATNFRDYAIIFTQLEFGDEPFNTVELYSLT ETASQEAMGLFTKWSRSLGFLSQ TR TRPLEQKLISEEDLAANDILDYKDDDDKV
Tag:	C-Myc/DDK
Predicted MW:	17.9 kDa
Concentration:	>0.05 µg/µL as determined by microplate BCA method
Purity:	> 80% as determined by SDS-PAGE and Coomassie blue staining
Buffer:	25 mM Tris-HCl, 100 mM glycine, pH 7.3, 10% glycerol
Preparation:	Recombinant protein was captured through anti-DDK affinity column followed by conventional chromatography steps.
Note:	For testing in cell culture applications, please filter before use. Note that you may experience some loss of protein during the filtration process.
Storage:	Store at -80°C.
Stability:	Stable for 12 months from the date of receipt of the product under proper storage and handling conditions. Avoid repeated freeze-thaw cycles.
RefSeq:	<u>NP_945184</u>
Locus ID:	158062
UniProt ID:	<u>P62502</u>


[View online »](#)

RefSeq Size:	738
Cytogenetics:	9q34.3
RefSeq ORF:	489
Synonyms:	hLcn5; LCN5; UNQ643
Summary:	May play a role in male fertility.[UniProtKB/Swiss-Prot Function]
Protein Families:	Secreted Protein

Product images:



Coomassie blue staining of purified LCN6 protein (Cat# [TP309389]). The protein was produced from HEK293T cells transfected with LCN6 cDNA clone (Cat# [RC209389]) using MegaTran 2.0 (Cat# [TT210002]).