

## Product datasheet for **TP309388**

### **BANF2 (NM\_178477) Human Recombinant Protein**

#### Product data:

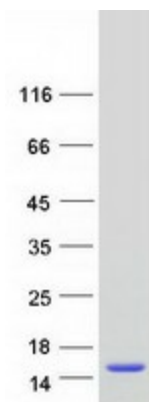
|                                       |   |
|---------------------------------------|---|
| Product Type:                         | Recombinant Proteins  |
| Description:                          | Recombinant protein of human barrier to autointegration factor 2 (BANF2), transcript variant 1, 20 µg   |
| Species:                              | Human   |
| Expression Host:                      | HEK293T   |
| Expression cDNA Clone or AA Sequence: | >RC209388 protein sequence<br><b>Red</b> =Cloning site <b>Green</b> =Tags(s)<br><br>MDDMSPRLRAFLSEPIGEKDVCWVDGISHELAINLVTKGINKAYILLGQFLLMHKNEAEFQRWLICFGA<br>TECEAAQTSHCLKEWCACFL<br><br><b>TRTRPLEQKLISEEDLAANDILDYKDDDDKV</b> |
| Tag:                                  | C-Myc/DDK   |
| Predicted MW:                         | 10.1 kDa  |
| Concentration:                        | >0.05 µg/µL as determined by microplate BCA method  |
| Purity:                               | > 80% as determined by SDS-PAGE and Coomassie blue staining   |
| Buffer:                               | 25 mM Tris-HCl, 100 mM glycine, pH 7.3, 10% glycerol  |
| Preparation:                          | Recombinant protein was captured through anti-DDK affinity column followed by conventional chromatography steps.  |
| Note:                                 | For testing in cell culture applications, please filter before use. Note that you may experience some loss of protein during the filtration process.  |
| Storage:                              | Store at -80°C.   |
| Stability:                            | Stable for 12 months from the date of receipt of the product under proper storage and handling conditions. Avoid repeated freeze-thaw cycles.   |
| RefSeq:                               | <a href="#">NP_848572</a>   |
| Locus ID:                             | 140836  |
| UniProt ID:                           | <a href="#">Q9H503</a> , <a href="#">A0A140VK85</a>   |
| RefSeq Size:                          | 629   |



[View online »](#)

|               |  |
|---------------|--|
| Cytogenetics: | 20p12.1  |
| RefSeq ORF:   | 270  |
| Synonyms:     | BAF-L; BAF2; BAFL; C20orf179   |
| Summary:      | May play a role in BANF1 regulation and influence tissue-specific roles of BANF1.<br>[UniProtKB/Swiss-Prot Function] |

### Product images:



Coomassie blue staining of purified BANF2 protein (Cat# TP309388). The protein was produced from HEK293T cells transfected with BANF2 cDNA clone (Cat# [RC209388]) using MegaTran 2.0 (Cat# [TT210002]).