

## Product datasheet for **TP309385M**

### SKP1 (NM\_170679) Human Recombinant Protein

#### Product data:

|                                       |   |
|---------------------------------------|---|
| Product Type:                         | Recombinant Proteins  |
| Description:                          | Recombinant protein of human S-phase kinase-associated protein 1 (SKP1), transcript variant 2, 100 µg   |
| Species:                              | Human   |
| Expression Host:                      | HEK293T   |
| Expression cDNA Clone or AA Sequence: | >RC209385 representing NM_170679<br><b>Red</b> =Cloning site <b>Green</b> =Tags(s)  |
|                                       | MPSIKLQSSDGEIFEVDVEIAKQSVTIKTMLEDLGMDDEGDDDPVPLPNVNAAILKKVIQWCTHHKDDPP<br>PPEDDENKEKRTDDIPVWDQEFKVDQGTFLFELILAAANYLDIKGLLDVTCKTVANMIKGTPEEIRKTFN<br>IKNDFTEEEEAQVRKENQWCEEK |
|                                       | <b>TRTRPLEQKLISEEDLAANDILDYKDDDDKV</b>  |
| Tag:                                  | C-Myc/DDK   |
| Predicted MW:                         | 18.5 kDa  |
| Concentration:                        | >0.05 µg/µL as determined by microplate BCA method  |
| Purity:                               | > 80% as determined by SDS-PAGE and Coomassie blue staining   |
| Buffer:                               | 25 mM Tris-HCl, 100 mM glycine, pH 7.3, 10% glycerol  |
| Preparation:                          | Recombinant protein was captured through anti-DDK affinity column followed by conventional chromatography steps.  |
| Note:                                 | For testing in cell culture applications, please filter before use. Note that you may experience some loss of protein during the filtration process.                        |
| Storage:                              | Store at -80°C.   |
| Stability:                            | Stable for 12 months from the date of receipt of the product under proper storage and handling conditions. Avoid repeated freeze-thaw cycles.                               |
| RefSeq:                               | <a href="#">NP_733779</a>   |
| Locus ID:                             | 6500  |
| UniProt ID:                           | <a href="#">P63208</a>  |



[View online »](#)

RefSeq Size: 1486

Cytogenetics: 5q31.1

RefSeq ORF: 489

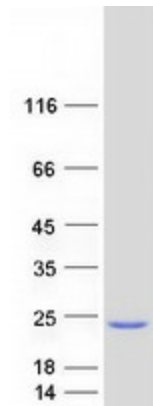
Synonyms: EMC19; OCP-II; OCP2; p19A; SKP1A; TCEB1L

**Summary:** This gene encodes a component of SCF complexes, which are composed of this protein, cullin 1, a ring-box protein, and one member of the F-box family of proteins. This protein binds directly to the F-box motif found in F-box proteins. SCF complexes are involved in the regulated ubiquitination of specific protein substrates, which targets them for degradation by the proteasome. Specific F-box proteins recognize different target protein(s), and many specific SCF substrates have been identified including regulators of cell cycle progression and development. Studies have also characterized the protein as an RNA polymerase II elongation factor. Alternative splicing of this gene results in two transcript variants. A related pseudogene has been identified on chromosome 7. [provided by RefSeq, Jul 2008]

**Protein Families:** Druggable Genome

**Protein Pathways:** Cell cycle, Oocyte meiosis, TGF-beta signaling pathway, Ubiquitin mediated proteolysis, Wnt signaling pathway

### Product images:



Coomassie blue staining of purified SKP1 protein (Cat# [TP309385]). The protein was produced from HEK293T cells transfected with SKP1 cDNA clone (Cat# [RC209385]) using MegaTran 2.0 (Cat# [TT210002]).