

Product datasheet for **TP309372M**

C6orf58 (NM_001010905) Human Recombinant Protein

Product data:

Product Type: Recombinant Proteins

Description: Purified recombinant protein of Homo sapiens chromosome 6 open reading frame 58 (C6orf58), 100 µg

Species: Human

Expression Host: HEK293T

Expression cDNA Clone or AA Sequence: >RC209372 protein sequence
Red=Cloning site **Green**=Tags(s)

MAFLPSWVCVLVGSFASLAGTSNLSETEPPLWKESPGQLSDYRVENSMYIINPWVYLERMGMKYIILNQ
TARYFAKFAPDNEQNILWGLPLQYGWQYRTGRLADPTRRTNCGYESGDHMCISVDSWWADLNYFLSSLPF
LAAVDSGVMGISSDQVRLPPPKNERKFCYDVSSCRSSFPETMKNWNTFYQYLQSPFSKFDDLLKYLWAA
HTSTLADNIKSFEDRYDYYSKAEAHFERSWVLAVDHLAAVLFPTTLIRSYKFQKGMPPRILLNTDVAPFI
SDFTAQNVVLVLLNMLDNVDKISIGYLCTEKSNVYRDHSESSRSYGNS

TRTRPLEQKLISEEDLAANDILDYKDDDDKV

Tag: C-Myc/DDK

Predicted MW: 37.7 kDa

Concentration: >0.05 µg/µL as determined by microplate BCA method

Purity: > 80% as determined by SDS-PAGE and Coomassie blue staining

Buffer: 25 mM Tris-HCl, 100 mM glycine, pH 7.3, 10% glycerol

Preparation: Recombinant protein was captured through anti-DDK affinity column followed by conventional chromatography steps.

Note: For testing in cell culture applications, please filter before use. Note that you may experience some loss of protein during the filtration process.

Storage: Store at -80°C.

Stability: Stable for 12 months from the date of receipt of the product under proper storage and handling conditions. Avoid repeated freeze-thaw cycles.

RefSeq: [NP_001010905](#)

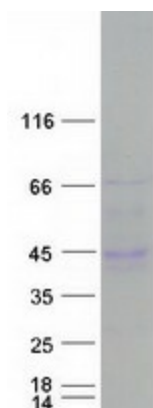
Locus ID: 352999



[View online »](#)

UniProt ID:	<u>Q6P5S2</u>
RefSeq Size:	1201
Cytogenetics:	6q22.33
RefSeq ORF:	990
Synonyms:	LEG1
Summary:	May be involved in early liver development.[UniProtKB/Swiss-Prot Function]
Protein Families:	Secreted Protein

Product images:



Coomassie blue staining of purified C6orf58 protein (Cat# [TP309372]). The protein was produced from HEK293T cells transfected with C6orf58 cDNA clone (Cat# [RC209372]) using MegaTran 2.0 (Cat# [TT210002]).