

## Product datasheet for **TP309372**

### **C6orf58 (NM\_001010905) Human Recombinant Protein**

#### Product data:

**Product Type:** Recombinant Proteins

**Description:** Purified recombinant protein of Homo sapiens chromosome 6 open reading frame 58 (C6orf58), 20 µg

**Species:** Human

**Expression Host:** HEK293T

**Expression cDNA Clone or AA Sequence:** >RC209372 protein sequence  
**Red**=Cloning site **Green**=Tags(s)

MAFLPSWVCVLVGSFASLAGTSNLSETEPPLWKESPGQLSDYRVENSMYIINPWVYLERMGMKYIILNQ  
TARYFAKFPDNEQNILWGLPLQYGWQYRTGRLADPTRRTNCGYESGDHMCISVDSWWADLNYFLSSLPF  
LAAVDSGVMGISSDQVRLPPPKNERKFCYDVSSCRSSFPETMKNKWNFTFYQLQSPFSKFDDLLKYLWAA  
HTSTLADNIKSFEDRYDYYSKAEAHFERSWVLAVDHLAAVLFPTTLIRSYKFQKGMPPRILLNTDVAPFI  
SDFTAQNVVLLNMLDNVDKISIGYLCTEKSNVYRDHSESSRSYGNS

**TRTRPLEQKLISEEDLAANDILDYKDDDDKV**

**Tag:** C-Myc/DDK

**Predicted MW:** 37.7 kDa

**Concentration:** >0.05 µg/µL as determined by microplate BCA method

**Purity:** > 80% as determined by SDS-PAGE and Coomassie blue staining

**Buffer:** 25 mM Tris-HCl, 100 mM glycine, pH 7.3, 10% glycerol

**Preparation:** Recombinant protein was captured through anti-DDK affinity column followed by conventional chromatography steps.

**Note:** For testing in cell culture applications, please filter before use. Note that you may experience some loss of protein during the filtration process.

**Storage:** Store at -80°C.

**Stability:** Stable for 12 months from the date of receipt of the product under proper storage and handling conditions. Avoid repeated freeze-thaw cycles.

**RefSeq:** [NP\\_001010905](#)

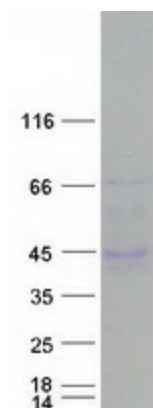
**Locus ID:** 352999



[View online »](#)

UniProt ID:	<u>Q6P5S2</u>
RefSeq Size:	1201
Cytogenetics:	6q22.33
RefSeq ORF:	990
Synonyms:	LEG1
Summary:	May be involved in early liver development.[UniProtKB/Swiss-Prot Function]
Protein Families:	Secreted Protein

### Product images:



Coomassie blue staining of purified C6orf58 protein (Cat# TP309372). The protein was produced from HEK293T cells transfected with C6orf58 cDNA clone (Cat# [RC209372]) using MegaTran 2.0 (Cat# [TT210002]).