

Product datasheet for **TP309363SE**

LCN1 (NM_002297) Human Recombinant Protein

Product data:

Product Type:	Recombinant Proteins
Description:	Purified recombinant protein of Human lipocalin 1 (tear prealbumin) (LCN1), secretory expressed in HEK293T cells, 20ug
Species:	Human
Expression Host:	HEK293T
Expression cDNA Clone or AA Sequence:	>RC209363 protein sequence Red =Cloning site Green =Tags(s)
	 MKPLLLAVSLGLIAALQAHLLASDEEIQDVSGTWYLKAMTVDREFPEMNLESVTPMTLTTLEGGNLEAK VTMLISGRQCQEVKAVLEKTDEPGKYTADGGKHVAYIIRSHVKDHYIFYCEGELHGKPVGRVGLVGRDPKN NLEALEDFEKAAGARGLSTESILIPRQSETCSPGSD TRTRPLEQKLISEEDLAANDILDYKDDDDKV
Tag:	C-Myc/DDK
Predicted MW:	21.0 kDa
Concentration:	>50 ug/mL as determined by microplate Bradford method
Purity:	> 80% as determined by SDS-PAGE and Coomassie blue staining
Buffer:	25mM Tris-HCl, pH7.3, 100mM glycine, 10% glycerol
Note:	For culture applications, please filter before use. Note that you may experience some loss of protein during the filtration process.
Storage:	Store at -80°C after receiving vials.
Stability:	Stable for at least 1 year from receipt of products under proper storage and handling conditions. Avoid repeated freeze-thaw cycles.
RefSeq:	<u>NP_002288</u>
Locus ID:	3933
UniProt ID:	<u>P31025</u> , <u>A0A024R8D7</u>
RefSeq Size:	789
Cytogenetics:	9q34.3



[View online »](#)

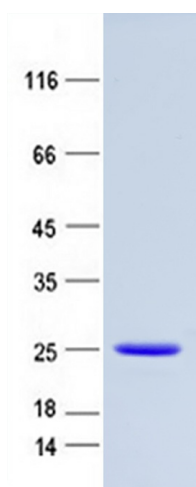
RefSeq ORF: 528

Synonyms: PMFA; TLC; TP; VEGP

Summary: This gene encodes a member of the lipocalin family of small secretory proteins. Lipocalins are extracellular transport proteins that bind to a variety of hydrophobic ligands. The encoded protein is the primary lipid binding protein in tears and is overproduced in response to multiple stimuli including infection and stress. The encoded protein may be a marker for chromosome aneuploidy as well as an autoantigen in Sjogren's syndrome. Alternatively spliced transcript variants encoding multiple isoforms have been observed for this gene, and two pseudogenes of this gene are also located on the long arm of chromosome 9. [provided by RefSeq, Nov 2011]

Protein Families: Secreted Protein

Product images:



Coomassie blue staining of purified LCN1 protein (Cat #TP309363SE). The protein was produced from mammalian cells transfected with LCN1 cDNA clone (Cat #[RC209363]).