

## Product datasheet for **TP309363M**

### LCN1 (NM\_002297) Human Recombinant Protein

#### Product data:

Product Type:	Recombinant Proteins
Description:	Recombinant protein of human lipocalin 1 (tear prealbumin) (LCN1), 100 µg
Species:	Human
Expression Host:	HEK293T
Expression cDNA Clone or AA Sequence:	>RC209363 protein sequence <b>Red</b> =Cloning site <b>Green</b> =Tags(s)
	MKPLLLAVSLGLIAALQAHLLASDEEIQDVSGTWYLKAMTVDREFPEMNLESVTPMTLLTTLEGGNLEAK VTMLISGRQCQEVKAVLEKTDEPGKYTADGGKHVAYIIRSHVKDHYIFYCEGELHGKPVVRGKLVGRDPKN NLEALEDFEKAAGARGLSTESILIPRQSETCSPGSD
	<b>TRTRPLEQKLISEEDLAANDILDYKDDDDKV</b>
Tag:	C-Myc/DDK
Predicted MW:	17.4 kDa
Concentration:	>0.05 µg/µL as determined by microplate BCA method
Purity:	> 80% as determined by SDS-PAGE and Coomassie blue staining
Buffer:	25 mM Tris-HCl, 100 mM glycine, pH 7.3, 10% glycerol
Preparation:	Recombinant protein was captured through anti-DDK affinity column followed by conventional chromatography steps.
Note:	For testing in cell culture applications, please filter before use. Note that you may experience some loss of protein during the filtration process.
Storage:	Store at -80°C.
Stability:	Stable for 12 months from the date of receipt of the product under proper storage and handling conditions. Avoid repeated freeze-thaw cycles.
RefSeq:	<u><a href="#">NP_002288</a></u>
Locus ID:	3933
UniProt ID:	<u><a href="#">P31025</a></u> , <u><a href="#">A0A024R8D7</a></u>
RefSeq Size:	789



[View online »](#)

Cytogenetics: 9q34.3

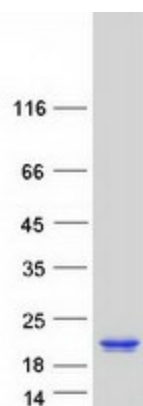
RefSeq ORF: 528

Synonyms: PMFA; TLC; TP; VEGP

**Summary:** This gene encodes a member of the lipocalin family of small secretory proteins. Lipocalins are extracellular transport proteins that bind to a variety of hydrophobic ligands. The encoded protein is the primary lipid binding protein in tears and is overproduced in response to multiple stimuli including infection and stress. The encoded protein may be a marker for chromosome aneuploidy as well as an autoantigen in Sjogren's syndrome. Alternatively spliced transcript variants encoding multiple isoforms have been observed for this gene, and two pseudogenes of this gene are also located on the long arm of chromosome 9. [provided by RefSeq, Nov 2011]

**Protein Families:** Secreted Protein

### Product images:



Coomassie blue staining of purified LCN1 protein (Cat# [TP309363]). The protein was produced from HEK293T cells transfected with LCN1 cDNA clone (Cat# [RC209363]) using MegaTran 2.0 (Cat# [TT210002]).