

## Product datasheet for **TP309357L**

### NSMCE4A (NM\_017615) Human Recombinant Protein

#### Product data:

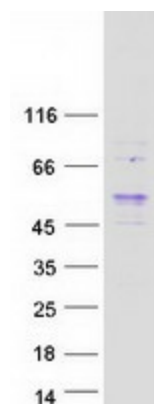
Product Type:	Recombinant Proteins
Description:	Recombinant protein of human non-SMC element 4 homolog A ( <i>S. cerevisiae</i> ) (NSMCE4A), 1 mg
Species:	Human
Expression Host:	HEK293T
Expression cDNA Clone or AA Sequence:	>RC209357 protein sequence <b>Red</b> =Cloning site <b>Green</b> =Tags(s)
	MSGDSSGRGPEGRGRGRDPHRDRTSRSRSRSPSPRRGSARERREAPERPSLEDTEPSDSGDEMMDP ASLEAEADQGLCRQIRHQYRALINSVQQNREDILNAGDKLTEVLEEANTLFNEVSRAREAVLDAHFLVLA SDLGKEKAKQLRSDLSSFDMLRYVETLLTHMGVNPLEAEELIRDESDPDFEFIVYDSWKITGRTAENTFN KTHTFHLLGSIYGECPVPKPRVDRPRKVPVIQEERAMPAQLRRMEESHQEATEKEVERILGLLQTYFRE DPDTPMSFFDFVVDPHSFPRTVENIFHVSFIIRDGFARIRLDQDRLPVIEPVSINEENEGFEHNTQVRNQ GIIALSYRDWEIVKTFEISEPVITPSQRQKPSA
	<b>TRTRPLEQKLISEEDLAANDILDYKDDDDKV</b>
Tag:	C-Myc/DDK
Predicted MW:	44.1 kDa
Concentration:	>0.05 µg/µL as determined by microplate BCA method
Purity:	> 80% as determined by SDS-PAGE and Coomassie blue staining
Buffer:	25 mM Tris-HCl, 100 mM glycine, pH 7.3, 10% glycerol
Preparation:	Recombinant protein was captured through anti-DDK affinity column followed by conventional chromatography steps.
Note:	For testing in cell culture applications, please filter before use. Note that you may experience some loss of protein during the filtration process.
Storage:	Store at -80°C.
Stability:	Stable for 12 months from the date of receipt of the product under proper storage and handling conditions. Avoid repeated freeze-thaw cycles.
RefSeq:	<u>NP_060085</u>



[View online »](#)

Locus ID:	54780
UniProt ID:	<u><a href="#">Q9NXX6</a></u>
RefSeq Size:	1420
Cytogenetics:	10q26.13
RefSeq ORF:	1152
Synonyms:	C10orf86; NS4EA; NSE4A
Summary:	Component of the SMC5-SMC6 complex, a complex involved in DNA double-strand breaks by homologous recombination. The complex may promote sister chromatid homologous recombination by recruiting the SMC1-SMC3 cohesin complex to double-strand breaks. The complex is required for telomere maintenance via recombination in ALT (alternative lengthening of telomeres) cell lines and mediates sumoylation of shelterin complex (telosome) components which is proposed to lead to shelterin complex disassembly in ALT-associated PML bodies (APBs). Is involved in positive regulation of response to DNA damage stimulus.[UniProtKB/Swiss-Prot Function]

### Product images:



Coomassie blue staining of purified NSMCE4A protein (Cat# [TP309357]). The protein was produced from HEK293T cells transfected with NSMCE4A cDNA clone (Cat# [RC209357]) using MegaTran 2.0 (Cat# [TT210002]).