

## Product datasheet for **TP309350M**

### Cystatin SA (CST2) (NM\_001322) Human Recombinant Protein

#### Product data:

**Product Type:** Recombinant Proteins

**Description:** Recombinant protein of human cystatin SA (CST2), 100 µg

**Species:** Human

**Expression Host:** HEK293T

**Expression cDNA Clone  
or AA Sequence:** >RC209350 protein sequence  
**Red**=Cloning site **Green**=Tags(s)

MAWPLCTLLLLLATQAVALLAWSPQEEDRIIEGGIYDADLNDERVQRALHFVISEYNKATEDEYYRRLLRV  
LRAREQIVGGVNYFFDIEVGRITCKSQPNLDTCAFHEQPELQKKQLCSFQIYEVWPWEDRMSLVNSRCQE  
A

**TRTRPLEQKLISEEDLAANDILDYKDDDDKV**

**Tag:** C-Myc/DDK

**Predicted MW:** 14.3 kDa

**Concentration:** >0.05 µg/µL as determined by microplate BCA method

**Purity:** > 80% as determined by SDS-PAGE and Coomassie blue staining

**Buffer:** 25 mM Tris-HCl, 100 mM glycine, pH 7.3, 10% glycerol

**Preparation:** Recombinant protein was captured through anti-DDK affinity column followed by conventional chromatography steps.

**Note:** For testing in cell culture applications, please filter before use. Note that you may experience some loss of protein during the filtration process.

**Storage:** Store at -80°C.

**Stability:** Stable for 12 months from the date of receipt of the product under proper storage and handling conditions. Avoid repeated freeze-thaw cycles.

**RefSeq:** [NP\\_001313](#)

**Locus ID:** 1470

**UniProt ID:** [P09228](#)

**RefSeq Size:** 694



[View online »](#)

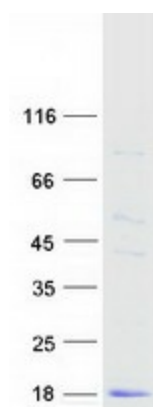
Cytogenetics: 20p11.21

RefSeq ORF: 423

**Summary:** The cystatin superfamily encompasses proteins that contain multiple cystatin-like sequences. Some of the members are active cysteine protease inhibitors, while others have lost or perhaps never acquired this inhibitory activity. There are three inhibitory families in the superfamily, including the type 1 cystatins (stefins), type 2 cystatins and the kininogens. The type 2 cystatin proteins are a class of cysteine proteinase inhibitors found in a variety of human fluids and secretions, where they appear to provide protective functions. The cystatin locus on chromosome 20 contains the majority of the type 2 cystatin genes and pseudogenes. This gene is located in the cystatin locus and encodes a secreted thiol protease inhibitor found at high levels in saliva, tears and seminal plasma. [provided by RefSeq, Jul 2008]

**Protein Families:** Secreted Protein

### Product images:



Coomassie blue staining of purified CST2 protein (Cat# [TP309350]). The protein was produced from HEK293T cells transfected with CST2 cDNA clone (Cat# [RC209350]) using MegaTran 2.0 (Cat# [TT210002]).