

## Product datasheet for **TP309349L**

### Cystatin S (CST4) (NM\_001899) Human Recombinant Protein

#### Product data:

Product Type:	Recombinant Proteins
Description:	Recombinant protein of human cystatin S (CST4), 1 mg
Species:	Human
Expression Host:	HEK293T
Expression cDNA Clone or AA Sequence:	>RC209349 protein sequence <b>Red</b> =Cloning site <b>Green</b> =Tags(s)
	MARPLCTLLLLMATLAGALASSSKEENRIIPGGIYDADLNDEWVQRALHFAISEYNKATEDEYYRRPLQV LRAREQTFGGVNYFFDVEVGRITCKSQPNLDTCAFHEQPELQKKQLCSFEIYVWPWEDRMSLVNSRCQE A
	<b>TRTRPLEQKLISEEDLAANDILDYKDDDDKV</b>
Tag:	C-Myc/DDK
Predicted MW:	14.1 kDa
Concentration:	>0.05 µg/µL as determined by microplate BCA method
Purity:	> 80% as determined by SDS-PAGE and Coomassie blue staining
Buffer:	25 mM Tris-HCl, 100 mM glycine, pH 7.3, 10% glycerol
Preparation:	Recombinant protein was captured through anti-DDK affinity column followed by conventional chromatography steps.
Note:	For testing in cell culture applications, please filter before use. Note that you may experience some loss of protein during the filtration process.
Storage:	Store at -80°C.
Stability:	Stable for 12 months from the date of receipt of the product under proper storage and handling conditions. Avoid repeated freeze-thaw cycles.
RefSeq:	<a href="#">NP_001890</a>
Locus ID:	1472
UniProt ID:	<a href="#">P01036</a>
RefSeq Size:	736



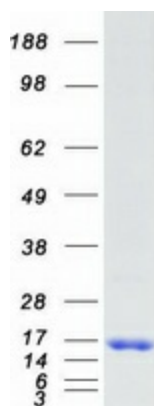
[View online »](#)

Cytogenetics: 20p11.21

RefSeq ORF: 423

**Summary:** The cystatin superfamily encompasses proteins that contain multiple cystatin-like sequences. Some of the members are active cysteine protease inhibitors, while others have lost or perhaps never acquired this inhibitory activity. There are three inhibitory families in the superfamily, including the type 1 cystatins (stefins), type 2 cystatins and the kininogens. The type 2 cystatin proteins are a class of cysteine proteinase inhibitors found in a variety of human fluids and secretions. The cystatin locus on chromosome 20 contains the majority of the type 2 cystatin genes and pseudogenes. This gene is located in the cystatin locus and encodes a type 2 salivary cysteine peptidase inhibitor. The protein is an S-type cystatin, based on its high level of expression in saliva, tears and seminal plasma. The specific role in these fluids is unclear but antibacterial and antiviral activity is present, consistent with a protective function. [provided by RefSeq, Jul 2008]

### Product images:



Coomassie blue staining of purified CST4 protein (Cat# [TP309349]). The protein was produced from HEK293T cells transfected with CST4 cDNA clone (Cat# [RC209349]) using MegaTran 2.0 (Cat# [TT210002]).