

Product datasheet for **TP309339M**

PIGL (NM_004278) Human Recombinant Protein

Product data:

| | |
|---------------------------------------|--|
| Product Type: | Recombinant Proteins |
| Description: | Recombinant protein of human phosphatidylinositol glycan anchor biosynthesis, class L (PIGL), 100 µg |
| Species: | Human |
| Expression Host: | HEK293T |
| Expression cDNA Clone or AA Sequence: | >RC209339 protein sequence Red =Cloning site Green =Tags(s) |

MEAMWLLCVALAVLAWGFLWVWDSSERMKSREQGGRLGAESRTLLVIAHPDDEAMFFAPTVLGLARLRHW
VYLLCFSAGNYNQGETRKKELLQSCDVLGIPLSSVMIIDNRDFDDPGMQWDTEHVARVLLQHIEVNGI
NLVWTFDAGGVSGHSNHIALYAAVRALHSEGLPKGCSVLTLQSVNVLRYISLLDLPLSLLHTQDVLV
LNSKEVAQAKKAMSCHRSQLLWFRRLYIIFSRMRINLSLFL

TRTRPLEQKLISEEDLAANDILDYKDDDDKV

| | |
|----------------|--|
| Tag: | C-Myc/DDK |
| Predicted MW: | 28.4 kDa |
| Concentration: | >0.05 µg/µL as determined by microplate BCA method |
| Purity: | > 80% as determined by SDS-PAGE and Coomassie blue staining |
| Buffer: | 25 mM Tris-HCl, 100 mM glycine, pH 7.3, 10% glycerol |
| Preparation: | Recombinant protein was captured through anti-DDK affinity column followed by conventional chromatography steps. |
| Note: | For testing in cell culture applications, please filter before use. Note that you may experience some loss of protein during the filtration process. |
| Storage: | Store at -80°C. |
| Stability: | Stable for 12 months from the date of receipt of the product under proper storage and handling conditions. Avoid repeated freeze-thaw cycles. |
| RefSeq: | NP_004269 |
| Locus ID: | 9487 |



[View online »](#)

UniProt ID: [Q9Y2B2](#)

RefSeq Size: 1163

Cytogenetics: 17p11.2

RefSeq ORF: 756

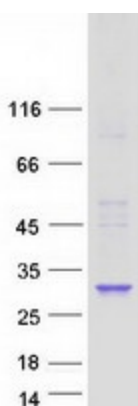
Synonyms: CHIME

Summary: This gene encodes an enzyme that catalyzes the second step of glycosylphosphatidylinositol (GPI) biosynthesis, which is the de-N-acetylation of N-acetylglucosaminylphosphatidylinositol (GlcNAc-PI). Study of a similar rat enzyme suggests that this protein localizes to the endoplasmic reticulum. [provided by RefSeq, Jul 2008]

Protein Families: Transmembrane

Protein Pathways: Glycosylphosphatidylinositol(GPI)-anchor biosynthesis, Metabolic pathways

Product images:



Coomassie blue staining of purified PIGL protein (Cat# [TP309339]). The protein was produced from HEK293T cells transfected with PIGL cDNA clone (Cat# [RC209339]) using MegaTran 2.0 (Cat# [TT210002]).