

Product datasheet for **TP309339L**

PIGL (NM_004278) Human Recombinant Protein

Product data:

Product Type:	Recombinant Proteins
Description:	Recombinant protein of human phosphatidylinositol glycan anchor biosynthesis, class L (PIGL), 1 mg
Species:	Human
Expression Host:	HEK293T
Expression cDNA Clone or AA Sequence:	>RC209339 protein sequence Red =Cloning site Green =Tags(s)

MEAMWLLCVALAVLAWGFLWVWDSSERMKSREQGGRLGAESRTLLVIAHPDDEAMFFAPTVLGLARLRHW
VYLLCFSAGNYNQGETRKKELLQSCDVLGIPLSSVMIIDNRDFDDPGMQWDTEHVARVLLQHIEVNGI
NLVWTFDAGGVSGHSNHIALYAAVRALHSEGLPKGCSVLTLQSVNVLRKYISLLDLPLSLLHTQDVLV
LNSKEVAQAKKAMSCHRSQLLWFRRLYIIFSRMRINLSLFL

TRTRPLEQKLISEEDLAANDILDYKDDDDKV

Tag:	C-Myc/DDK
Predicted MW:	28.4 kDa
Concentration:	>0.05 µg/µL as determined by microplate BCA method
Purity:	> 80% as determined by SDS-PAGE and Coomassie blue staining
Buffer:	25 mM Tris-HCl, 100 mM glycine, pH 7.3, 10% glycerol
Preparation:	Recombinant protein was captured through anti-DDK affinity column followed by conventional chromatography steps.
Note:	For testing in cell culture applications, please filter before use. Note that you may experience some loss of protein during the filtration process.
Storage:	Store at -80°C.
Stability:	Stable for 12 months from the date of receipt of the product under proper storage and handling conditions. Avoid repeated freeze-thaw cycles.
RefSeq:	NP_004269
Locus ID:	9487



[View online »](#)

UniProt ID: [Q9Y2B2](#)

RefSeq Size: 1163

Cytogenetics: 17p11.2

RefSeq ORF: 756

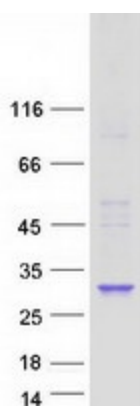
Synonyms: CHIME

Summary: This gene encodes an enzyme that catalyzes the second step of glycosylphosphatidylinositol (GPI) biosynthesis, which is the de-N-acetylation of N-acetylglucosaminylphosphatidylinositol (GlcNAc-PI). Study of a similar rat enzyme suggests that this protein localizes to the endoplasmic reticulum. [provided by RefSeq, Jul 2008]

Protein Families: Transmembrane

Protein Pathways: Glycosylphosphatidylinositol(GPI)-anchor biosynthesis, Metabolic pathways

Product images:



Coomassie blue staining of purified PIGL protein (Cat# [TP309339]). The protein was produced from HEK293T cells transfected with PIGL cDNA clone (Cat# [RC209339]) using MegaTran 2.0 (Cat# [TT210002]).