

Product datasheet for **TP309318L**

SEL1L3 (NM_015187) Human Recombinant Protein

Product data:

Product Type: Recombinant Proteins
Description: Recombinant protein of human KIAA0746 protein (KIAA0746), 1 mg
Species: Human
Expression Host: HEK293T
Expression cDNA Clone or AA Sequence: >Peptide sequence encoded by RC209318
Blue=ORF Red=Cloning site Green=Tag(s)

MQRRGAGLGWPRQQQQPPPLAVGPRAAAMVPSGGVPQGLGGRSACALLLLCYLNVVPSLGRQTSLTTS
 VIPKAEQSVAYKDFIYFTVFEGNVRNVSEVSVEYLCSQPCVWNLEAVSSSEFRSSIPVYKRWKNEKHL
 HTSRTQIVHVKFPSIMVYRDDYFIRHSISVSAVIVRAWITHKYSGRDWNVKEENLLHAVAKNYTLLQT
 IPPFERPFKDHQVCLEWNMGYIWNLRANRIPQCPLENDVALLGFPYASSGENTGIVKKFPRFRNRELE
 ATRRQRMDYPVFTVSLWLYLLHYCKANLGCILYFVDSNEMYGTSPVFLTEEGYLHIQMHLVKGEDLAVK
 TKFIPLKEWFRDLISFNGGQIVVTTSIGQDLKSYHNQTISFREDFHYNDTAGYFIIGGSRVAGIEGF
 FGPLKYYRLRSLHPAQIFNPLLEKQLAEQIKLYYERCAEVQEIVSVYASAACHGGERQEACHLHNSYLD
 LQRRYGRPSMCRAFPWEKELKDKHPSLQFALLEMDLLTVPRNQNESVSEIGGKIFEKAVKRLSSIDGLH
 QISSIVPFLTDSSCCGYHKASYLAVFYETGLNVPRDQLQGMLYSLVGGQGSERLSSMNLGKHYQGID
 NYPLDWELSYAYSNIATKTPLDQHTLQGDQAYVETIRLKDDEILKVQTKEDGDVFMWLKHEATRGNAA
 AQQRLAQMLFWGQQGVAKNPEAAIEWYAKGALETEDPALIYDYAIVLFGKGQGVKKNRRLALELMKKAAS
 KGLHQAVNGLGWYYHKFKKNYAKAAKYWLKAEEMGNPDASYNLGLVHLDGIFPGVPGRNQTLAGEYFHK
 AAQGGHMEGTLWCSLYITGNLETFPRDPEKAVWAKHVAEKNGYLGHVIRKGLNAYLEGSWHEALLY
 VLAETGIEVSQTNLAHICEERPDLARRYLGVNCVWRYNFSVFQIDAPSFAYLKMGDLYYGHQNSQ
 DLLESVQMYAQAALDGDSQGFFNLALLIEGTIIPHILDFLEIDSTLHSNNISILQELYERCWSHSNE
 ESFSPCSLAWLYLHLRLWLGAILHSALIYFLGTFLLSILIAWTVQYFQSVSASDPPRPSQASPDATS
 TASPAVTPAADASDQDQPTVTNNPEPRG
TRTRPLEQKLISEEDLAANDILDYKDDDDKV

Recombinant protein using RC209318 also available, [TP309318](#)

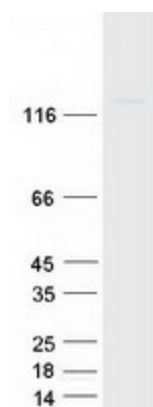
Tag: C-Myc/DDK
Predicted MW: 128.4 kDa
Concentration: >0.05 µg/µL as determined by microplate BCA method
Purity: > 80% as determined by SDS-PAGE and Coomassie blue staining



[View online »](#)

Buffer:	25 mM Tris-HCl, 100 mM glycine, pH 7.3, 10% glycerol
Preparation:	Recombinant protein was captured through anti-DDK affinity column followed by conventional chromatography steps.
Note:	For testing in cell culture applications, please filter before use. Note that you may experience some loss of protein during the filtration process.
Storage:	Store at -80°C.
Stability:	Stable for 12 months from the date of receipt of the product under proper storage and handling conditions. Avoid repeated freeze-thaw cycles.
RefSeq:	NP_056002
Locus ID:	23231
UniProt ID:	Q68CR1
RefSeq Size:	4543
Cytogenetics:	4p15.2
RefSeq ORF:	2937
Synonyms:	Sel-1L3
Protein Families:	Transmembrane

Product images:



Coomassie blue staining of purified SEL1L3 protein (Cat# [TP309318]). The protein was produced from HEK293T cells transfected with SEL1L3 cDNA clone (Cat# [RC209318]) using MegaTran 2.0 (Cat# [TT210002]).