

Product datasheet for TP309279L

TUBA3E (NM_207312) Human Recombinant Protein

Product data:

Product Type:	Recombinant Proteins
Description:	Recombinant protein of human tubulin, alpha 3e (TUBA3E), 1 mg
Species:	Human
Expression Host:	HEK293T
Expression cDNA Clone or AA Sequence:	>RC209279 protein sequence Red=Cloning site Green=Tags(s)

MRECISIHVGQAGVQIGNACWELYCLEHGIQPDGQMPSDKTIGGGDDSFNTFFSETGAGKHVPRAVFDL
EPTVWDEVRTGTYRQLFHPEQLITGKEDAASNYARGHYTIGKEIVDLVLDRIKRLADLCTGLQGFLIFHS
FGGGTGS GFASLLMERLSVDYSKKSLEFAIYPAPQVSTAVVEPYNSILTTHTLEHSDCAFMDNEAIY
DICRRNLDIERPTYTNLNLIGQIVSSITASLRFDGALNVDLTEFQTNLVPYPRIHFPLATYAPVISA EK
AYHEQLSVAEITNACFEPANQMVKCDPRHGKYM ACCMLYRGD VVPKDVNAAIATIKTKRTIQFVDWCPTG
FKVGINYQPPTVPPGGDLAKVQRAVCMLSNTTAAEAWARLVHKFDLMYAKWAFVHWYV GEGMEEGEFSE
AREDLAALEKDC EEVGVDSVEAEAE EGE EY

TRTRPLEQKLISEEDLAANDILDYKDDDDKV

Tag:	C-Myc/DDK
Predicted MW:	49.7 kDa
Concentration:	>0.05 µg/µL as determined by microplate BCA method
Purity:	> 80% as determined by SDS-PAGE and Coomassie blue staining
Buffer:	25 mM Tris-HCl, 100 mM glycine, pH 7.3, 10% glycerol
Preparation:	Recombinant protein was captured through anti-DDK affinity column followed by conventional chromatography steps.
Note:	For testing in cell culture applications, please filter before use. Note that you may experience some loss of protein during the filtration process.
Storage:	Store at -80°C.
Stability:	Stable for 12 months from the date of receipt of the product under proper storage and handling conditions. Avoid repeated freeze-thaw cycles.
RefSeq:	NP_997195



[View online »](#)

Locus ID: 112714

UniProt ID: [Q6PEY2](#)

RefSeq Size: 1554

Cytogenetics: 2q21.1

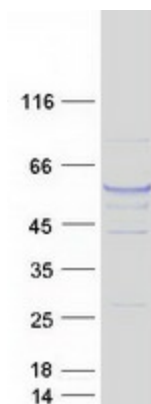
RefSeq ORF: 1350

Summary: Microtubules of the eukaryotic cytoskeleton perform essential and diverse functions and are composed of a heterodimer of alpha and beta tubulin. The genes encoding these microtubule constituents are part of the tubulin superfamily, which is composed of six distinct families. Genes from the alpha, beta and gamma tubulin families are found in all eukaryotes. The alpha and beta tubulins represent the major components of microtubules, while gamma tubulin plays a critical role in the nucleation of microtubule assembly. This gene encodes an alpha tubulin that highly conserved among species. A missense mutation in this gene has been potentially linked to microlissencephaly and global developmental delay. [provided by RefSeq, Jul 2016]

Protein Families: Druggable Genome

Protein Pathways: Gap junction, Pathogenic Escherichia coli infection

Product images:



Coomassie blue staining of purified TUBA3E protein (Cat# [TP309279]). The protein was produced from HEK293T cells transfected with TUBA3E cDNA clone (Cat# [RC209279]) using MegaTran 2.0 (Cat# [TT210002]).