

Product datasheet for **TP309276M**

TUBA3D (NM_080386) Human Recombinant Protein

Product data:

Product Type: Recombinant Proteins

Description: Recombinant protein of human tubulin, alpha 3d (TUBA3D), 100 µg

Species: Human

Expression Host: HEK293T

**Expression cDNA Clone
or AA Sequence:** >RC209276 protein sequence
Red=Cloning site **Green**=Tags(s)

MRECISIHVGQAGVQIGNACWELYCLEHGIQPDGQMPSDKTIGGGDDSFNTFFSETGAGKHVPRAVFVDL
EPTVWDEVRTGTYRQLFHPEQLITGKEDAANNYARGHYTIGKEIVDLVLDRIKRLADLCTGLQGFLIFHS
FGGGTGS GFASLLMERLSVDYGGKSKLEFAIYPAPQVSTAVVEPYNSILTTHTTLEHSDCAFMDNEAIY
DICRRNLDIERPTYTNLNLRLIGQIVSSITASLRFDGALNVDLTFEQTNLVPYPRIHFLATYAPVISA EK
AYHEQLSVAEITNACFEPANQMVKYDPRHGKYM ACCMLYRGDVVPKDVNAAIATIKTKRTIQFVDWCPTG
FKVGINYQPPTVPGGDLAKVQRAVCMLSNTTAIAEAWARLDHKFDLMYAKRAFVHWYV GEGMEEGEFSE
AREDLAALEKDYEEVGVDSVEAEAE EGE EY

TRTRPLEQKLISEEDLAANDILDYKDDDDKV

Tag: C-Myc/DDK

Predicted MW: 49.8 kDa

Concentration: >0.05 µg/µL as determined by microplate BCA method

Purity: > 80% as determined by SDS-PAGE and Coomassie blue staining

Buffer: 25 mM Tris-HCl, 100 mM glycine, pH 7.3, 10% glycerol

Preparation: Recombinant protein was captured through anti-DDK affinity column followed by conventional chromatography steps.

Note: For testing in cell culture applications, please filter before use. Note that you may experience some loss of protein during the filtration process.

Storage: Store at -80°C.

Stability: Stable for 12 months from the date of receipt of the product under proper storage and handling conditions. Avoid repeated freeze-thaw cycles.

RefSeq: [NP_525125](#)



[View online »](#)

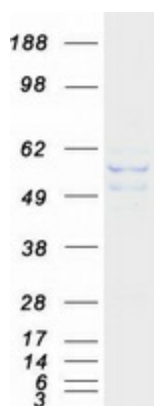
Locus ID: 113457
UniProt ID: [Q13748](#), [P0DPH7](#), [P0DPH8](#), [Q1ZYQ1](#)
RefSeq Size: 1646
Cytogenetics: 2q21.1
RefSeq ORF: 1350
Synonyms: H2-ALPHA; KTCN9; TUBA2

Summary: This gene encodes a member of the alpha tubulin family. Tubulin is a major component of microtubules, which are composed of alpha- and beta-tubulin heterodimers and microtubule-associated proteins in the cytoskeleton. Microtubules maintain cellular structure, function in intracellular transport, and play a role in spindle formation during mitosis. [provided by RefSeq, Oct 2011]

Protein Families: Druggable Genome

Protein Pathways: Gap junction, Pathogenic Escherichia coli infection

Product images:



Coomassie blue staining of purified TUBA3D protein (Cat# [TP309276]). The protein was produced from HEK293T cells transfected with TUBA3D cDNA clone (Cat# [RC209276]) using MegaTran 2.0 (Cat# [TT210002]).