

## Product datasheet for TP309276

### TUBA3D (NM\_080386) Human Recombinant Protein

#### Product data:

Product Type:	Recombinant Proteins
Description:	Recombinant protein of human tubulin, alpha 3d (TUBA3D), 20 µg
Species:	Human
Expression Host:	HEK293T
Expression cDNA Clone or AA Sequence:	>RC209276 protein sequence <b>Red</b> =Cloning site <b>Green</b> =Tags(s)
	MRECISIHVGQAGVQIGNACWELYCLEHGIQPDGQMPSDKTIGGGDDSFNTFFSETGAGKHVPRAVFVDL EPTVWDEVRTGTYRQLFHPEQLITGKEDAANNYARGHYTIGKEIVDLVLDRIKRLADLCTGLQGFLIFHS FGGGTGS GFASLLMERLSVDYGGKSKLEFAIYPAPQVSTAVVEPYNSILTTHTLEHSDCAFMDNEAIY DICRRNLDIERPTYTNLNLRLIGQIVSSITASLRFDGALNVDLTFQTNLVPYPRIHFLATYAPVISA EK AYHEQLSVAEITNACFEPANQMVKYDPRHGKYM ACCMLYRGDVVPKDVNAAIATIKTKRTIQFVDWCPTG FKVGINYQPPTVPPGGDLAKVQRAVCMLSNTTAIAEAWARLDHKFDLMYAKRAFVHWYV GEGMEEGEFSE AREDLAALEKDYEEVGVDSVEAEAE EGE EY
	<b>TRTRPLEQKLISEEDLAANDILDYKDDDDKV</b>
Tag:	C-Myc/DDK
Predicted MW:	49.8 kDa
Concentration:	>0.05 µg/µL as determined by microplate BCA method
Purity:	> 80% as determined by SDS-PAGE and Coomassie blue staining
Buffer:	25 mM Tris-HCl, 100 mM glycine, pH 7.3, 10% glycerol
Preparation:	Recombinant protein was captured through anti-DDK affinity column followed by conventional chromatography steps.
Note:	For testing in cell culture applications, please filter before use. Note that you may experience some loss of protein during the filtration process.
Storage:	Store at -80°C.
Stability:	Stable for 12 months from the date of receipt of the product under proper storage and handling conditions. Avoid repeated freeze-thaw cycles.
RefSeq:	<u><a href="#">NP_525125</a></u>



[View online »](#)

Locus ID: 113457

UniProt ID: [P0DPH7](#)

RefSeq Size: 1646

Cytogenetics: 2q21.1

RefSeq ORF: 1350

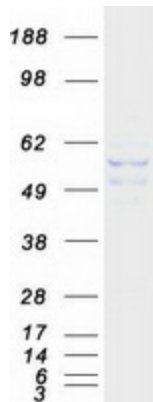
Synonyms: H2-ALPHA; KTCN9; TUBA2

**Summary:** This gene encodes a member of the alpha tubulin family. Tubulin is a major component of microtubules, which are composed of alpha- and beta-tubulin heterodimers and microtubule-associated proteins in the cytoskeleton. Microtubules maintain cellular structure, function in intracellular transport, and play a role in spindle formation during mitosis. [provided by RefSeq, Oct 2011]

**Protein Families:** Druggable Genome

**Protein Pathways:** Gap junction, Pathogenic Escherichia coli infection

### Product images:



Coomassie blue staining of purified TUBA3D protein (Cat# TP309276). The protein was produced from HEK293T cells transfected with TUBA3D cDNA clone (Cat# [RC209276]) using MegaTran 2.0 (Cat# [TT210002]).