

Product datasheet for **TP309259L**

Leptin (LEP) (NM_000230) Human Recombinant Protein

Product data:

Product Type: Recombinant Proteins

Description: Recombinant protein of human leptin (LEP), 1 mg

Species: Human

Expression Host: HEK293T

**Expression cDNA Clone
or AA Sequence:** >RC209259 protein sequence
Red=Cloning site **Green**=Tags(s)

MHWGTLCGFLWLWPYLFYVQAVPIQKVQDDTKLTIKTIVTRINDISHTQSVSSKQKVTGLDFIPGLHPIL
TLKMDQTLAVYQQILTSMPSRNVIQISNDLENLRDLLHVLAFSKSchLPWASGLETLDLGGVLEASGY
STEVVALSRLQGS LQDMLWQLDLSPGC

TRTRPLEQKLISEEDLAANDILDYKDDDDKV

Tag: C-Myc/DDK

Predicted MW: 16 kDa

Concentration: >0.05 µg/µL as determined by microplate BCA method

Purity: > 80% as determined by SDS-PAGE and Coomassie blue staining

Buffer: 25 mM Tris-HCl, 100 mM glycine, pH 7.3, 10% glycerol

Preparation: Recombinant protein was captured through anti-DDK affinity column followed by conventional chromatography steps.

Note: For testing in cell culture applications, please filter before use. Note that you may experience some loss of protein during the filtration process.

Storage: Store at -80°C.

Stability: Stable for 12 months from the date of receipt of the product under proper storage and handling conditions. Avoid repeated freeze-thaw cycles.

RefSeq: [NP_000221](#)

Locus ID: 3952

UniProt ID: [P41159](#), [A4D0Y8](#)

RefSeq Size: 3444



[View online »](#)

Cytogenetics: 7q32.1

RefSeq ORF: 501

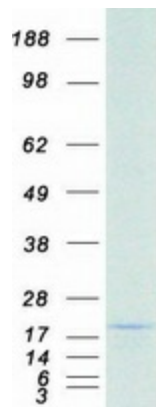
Synonyms: LEPD; OB; OBS

Summary: This gene encodes a protein that is secreted by white adipocytes into the circulation and plays a major role in the regulation of energy homeostasis. Circulating leptin binds to the leptin receptor in the brain, which activates downstream signaling pathways that inhibit feeding and promote energy expenditure. This protein also has several endocrine functions, and is involved in the regulation of immune and inflammatory responses, hematopoiesis, angiogenesis, reproduction, bone formation and wound healing. Mutations in this gene and its regulatory regions cause severe obesity and morbid obesity with hypogonadism in human patients. A mutation in this gene has also been linked to type 2 diabetes mellitus development. [provided by RefSeq, Aug 2017]

Protein Families: Druggable Genome, Secreted Protein

Protein Pathways: Adipocytokine signaling pathway, Cytokine-cytokine receptor interaction, Jak-STAT signaling pathway, Neuroactive ligand-receptor interaction

Product images:



Coomassie blue staining of purified LEP protein (Cat# [TP309259]). The protein was produced from HEK293T cells transfected with LEP cDNA clone (Cat# [RC209259]) using MegaTran 2.0 (Cat# [TT210002]).