

## Product datasheet for **TP309250M**

### ASCL2 (NM\_005170) Human Recombinant Protein

#### Product data:

Product Type:	Recombinant Proteins
Description:	Recombinant protein of human achaete-scute complex homolog 2 (Drosophila) (ASCL2), 100 µg
Species:	Human
Expression Host:	HEK293T
Expression cDNA Clone or AA Sequence:	>RC209250 protein sequence <b>Red</b> =Cloning site <b>Green</b> =Tags(s)
	 MDGGTLPRSAPPAPPVVPVVGCAARRRPASPELLRCSRRRRPATAETGGGAAAVARRNERERNRVKLVNLGF QALRQHVPFHGGASKKLSKVETLRSAYEYIRALQRLLAEHDAVRNALAGGLRPQAVRPSAPRGPPGTTTVA ASPSRASSSPGRGGSSEPGSPRSAYSSDDSGCEGALSPAERELLDFFSSWLGGY  <b>SGPTRTRPLEQKLISEEDLAANDILDYKDDDDKV</b>
Tag:	C-Myc/DDK
Predicted MW:	20 kDa
Concentration:	>0.05 µg/µL as determined by microplate BCA method
Purity:	> 80% as determined by SDS-PAGE and Coomassie blue staining
Buffer:	25 mM Tris-HCl, 100 mM glycine, pH 7.3, 10% glycerol
Preparation:	Recombinant protein was captured through anti-DDK affinity column followed by conventional chromatography steps.
Note:	For testing in cell culture applications, please filter before use. Note that you may experience some loss of protein during the filtration process.
Storage:	Store at -80°C.
Stability:	Stable for 12 months from the date of receipt of the product under proper storage and handling conditions. Avoid repeated freeze-thaw cycles.
RefSeq:	<u><a href="#">NP_005161</a></u>
Locus ID:	430
UniProt ID:	<u><a href="#">Q99929</a></u>



[View online »](#)

RefSeq Size: 1864

Cytogenetics: 11p15.5

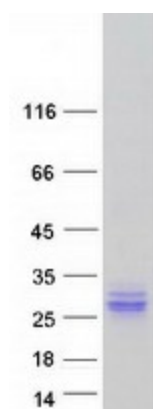
RefSeq ORF: 579

Synonyms: ASH2; bHLHa45; HASH2; MASH2

**Summary:** This gene is a member of the basic helix-loop-helix (BHLH) family of transcription factors. It activates transcription by binding to the E box (5'-CANNTG-3'). Dimerization with other BHLH proteins is required for efficient DNA binding. Involved in the determination of the neuronal precursors in the peripheral nervous system and the central nervous system. [provided by RefSeq, Jul 2008]

**Protein Families:** Druggable Genome, Transcription Factors

### Product images:



Coomassie blue staining of purified ASCL2 protein (Cat# [TP309250]). The protein was produced from HEK293T cells transfected with ASCL2 cDNA clone (Cat# [RC209250]) using MegaTran 2.0 (Cat# [TT210002]).