

Product datasheet for **TP309239M**

EPM2AIP1 (NM_014805) Human Recombinant Protein

Product data:

Product Type:	Recombinant Proteins
Description:	Recombinant protein of human EPM2A (laforin) interacting protein 1 (EPM2AIP1), 100 µg
Species:	Human
Expression Host:	HEK293T
Expression cDNA Clone or AA Sequence:	>RC209239 protein sequence Red =Cloning site Green =Tags(s)

MWMTPKRSKMEVDEALVFRPEWTQRYLVVEPPEGDGALCLVCRRLIVATRERDVRRHYEAEHEYYERYVA
DGERAALVERLRQGDLPVASFTPEERAARAGLGLCRLLALKGRGWGEGDFVYQCMEVLLREVLPEHVSVL
QGVDLSPDITRQRILSIDRNLRNQLFNRRARDFKAYSLALDDQAFVAYENYLLVFIRGVGPELEVQEDLLT
IINLTHHFSVGALMSAILESLSLQTAGLSLQRMVGLTTHTLRMIGENSGLVSYMREKAVSPNCWNVIHYSG
FLHLELLSSYDVDVNQIINTISEWIVLIKTRGVRRPEFQTLTTESESEHGERVNGRCLNNWLRGKTLKL
IFSLRKEMEAFVSVGATTVHFSDKQWLCDFGLVDIMEHLRELSEELRVSKVFAAAAFDHICTFEVKLN
LFQRHIEEKNLDFPALREVDELKQNKEDKIFDPDRYQMVICRLQKEFERHFKDLRFIKKDLELFSN
PFNFKPEYAPISVRVELTKLQANTNLWNEYRIKDLGQFYAGLSAESYPIIKGVACKVASLFDNSNQICEKA
FSYLTRNQHTLSQPLTDEHLQALFRVATTEMPEGWDDDLVRERNESNP

TRTRPLEQKLISEEDLAANDILDYKDDDDKV

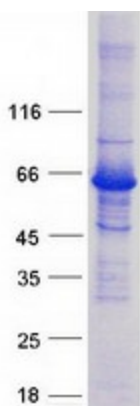
Tag:	C-Myc/DDK
Predicted MW:	70.2 kDa
Concentration:	>0.05 µg/µL as determined by microplate BCA method
Purity:	> 80% as determined by SDS-PAGE and Coomassie blue staining
Buffer:	25 mM Tris-HCl, 100 mM glycine, pH 7.3, 10% glycerol
Preparation:	Recombinant protein was captured through anti-DDK affinity column followed by conventional chromatography steps.
Note:	For testing in cell culture applications, please filter before use. Note that you may experience some loss of protein during the filtration process.
Storage:	Store at -80°C.



[View online »](#)

Stability:	Stable for 12 months from the date of receipt of the product under proper storage and handling conditions. Avoid repeated freeze-thaw cycles.
RefSeq:	NP_055620
Locus ID:	9852
UniProt ID:	Q7L775
RefSeq Size:	7439
Cytogenetics:	3p22.2
RefSeq ORF:	1821
Summary:	The EPM2A gene, which encodes laforin, is mutated in an autosomal recessive form of adolescent progressive myoclonus epilepsy. The protein encoded by this gene binds to laforin, but its function is not known. This gene is intronless. [provided by RefSeq, Oct 2008]

Product images:



Coomassie blue staining of purified EPM2AIP1 protein (Cat# [TP309239]). The protein was produced from HEK293T cells transfected with EPM2AIP1 cDNA clone (Cat# [RC209239]) using MegaTran 2.0 (Cat# [TT210002]).