

## Product datasheet for **TP309239L**

### **EPM2AIP1 (NM\_014805) Human Recombinant Protein**

#### **Product data:**

<b>Product Type:</b>	Recombinant Proteins
<b>Description:</b>	Recombinant protein of human EPM2A (laforin) interacting protein 1 (EPM2AIP1), 1 mg
<b>Species:</b>	Human
<b>Expression Host:</b>	HEK293T
<b>Expression cDNA Clone or AA Sequence:</b>	>RC209239 protein sequence <b>Red</b> =Cloning site <b>Green</b> =Tags(s)

MWMTPKRSKMEVDEALVFRPEWTQRYLVVEPPEGDGALCLVCRRLIVATRERDVRRHYEAEHEYYERYVA  
DGERAALVERLRQGDLPVASFTPEERAARAGLGLCRLLALKGRGWGEGDFVYQCMEVLLREVLPEHVSVL  
QGVDLSPDITRQRILSIDRNLRNQLFNRRARDFKAYSLALDDQAFVAYENYLLVFIRGVGPELEVQEDLLT  
IINLTHHFSVGALMSAILESQTAGLSLQRMVGLTTHTLRMIGENSGLVSYMREKAVSPNCWNVIHYSG  
FLHLELLSSYDVDVNQIINTISEWIVLIKTRGVRRPEFQTLTTESESEHGERVNGRCLNNWLRGKTLKL  
IFSLRKEMEAFVSVGATTVHFSDKQWLCDFGLVDIMEHLRELSEELRVSKVFAAAAFDHICTFEVKLN  
LFQRHIEEKNLTDFPALREVDELKQNKEDKIFDPDRYQMVICRLQKEFERHFKDLRFIKKDLELFSN  
PFNFKPEYAPISVRVELTKLQANTNLWNEYRIKDLGQFYAGLSAESYPIIKGVACKVASLFDNSNQICEKA  
FSYLTRNQHTLSQPLTDEHLQALFRVATTEMPEGWDDLVRRER NESNP

**TRTRPLEQKLISEEDLAANDILDYKDDDDKV**

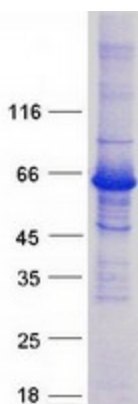
<b>Tag:</b>	C-Myc/DDK
<b>Predicted MW:</b>	70.2 kDa
<b>Concentration:</b>	>0.05 µg/µL as determined by microplate BCA method
<b>Purity:</b>	> 80% as determined by SDS-PAGE and Coomassie blue staining
<b>Buffer:</b>	25 mM Tris-HCl, 100 mM glycine, pH 7.3, 10% glycerol
<b>Preparation:</b>	Recombinant protein was captured through anti-DDK affinity column followed by conventional chromatography steps.
<b>Note:</b>	For testing in cell culture applications, please filter before use. Note that you may experience some loss of protein during the filtration process.
<b>Storage:</b>	Store at -80°C.



[View online »](#)

Stability:	Stable for 12 months from the date of receipt of the product under proper storage and handling conditions. Avoid repeated freeze-thaw cycles.
RefSeq:	<a href="#">NP_055620</a>
Locus ID:	9852
UniProt ID:	<a href="#">Q7L775</a>
RefSeq Size:	7439
Cytogenetics:	3p22.2
RefSeq ORF:	1821
Summary:	The EPM2A gene, which encodes laforin, is mutated in an autosomal recessive form of adolescent progressive myoclonus epilepsy. The protein encoded by this gene binds to laforin, but its function is not known. This gene is intronless. [provided by RefSeq, Oct 2008]

### Product images:



Coomassie blue staining of purified EPM2AIP1 protein (Cat# [TP309239]). The protein was produced from HEK293T cells transfected with EPM2AIP1 cDNA clone (Cat# [RC209239]) using MegaTran 2.0 (Cat# [TT210002]).