

## Product datasheet for **TP309238L**

### AGTPBP1 (NM\_015239) Human Recombinant Protein

#### Product data:

Product Type:	Recombinant Proteins
Description:	Recombinant protein of human ATP/GTP binding protein 1 (AGTPBP1), 1 mg
Species:	Human
Expression Host:	HEK293T
Expression cDNA	>RC209238 protein sequence
Clone or AA Sequence:	Red=Cloning site Green=Tags(s)

MSKLVKVIPEKSLTNNRIVGLLAQLEKINAEPSESDTARYVTSKILHLAQSQEKTRREMTAKGSTGMEIL  
LSTLENTKDLQTTLNLSILVELVSAGGRRVSFLVTKGGSQILLQLLMNASKESPPHEDLMVQIHSILA  
KIGPKDKKFGVKARINGALNITLNLVKQNLQNHRLVLPCLQLLRVYSANSVNSVSLGKNGVVELMFKIIG  
PFSKKNSSLIKVALDTLAALLKSKTNARRAVDRGYVQVLLTIYVDWHRHDNRHRNMLIRKILQSLKSVT  
NIKLRKAFIDANGMKILYNTSQLPVIPVTGPVAQLYSLPPEVDDVDESDDNDIDVEAENETENEDDL  
DQNFKNDDIETDINKLKPQQEPGRTIEDLKMYEHLFPELVDDFQDYDLISKEPKPFVFEKVRGPVIVPT  
AGEETSGNSGNLRKVVMMKENISSKGDEGEKKSTFMDLAKEDIKDNDRTLQQQPGDQNRTISSVHGLNNDI  
VKALDRITLQNIQSQTAPGFTAEMKKDCSLPLTVLTCACACPHMATCGNVLFEGRTVQLGKLCCTGVETE  
DDEDTESNSSVEQASVEVPDGPRTLHDPDLYIEIVKNTKSVPEYSEVAYPDYFGHIPPFPKEPILERPYG  
QRTKIAQDIERLIHQSDIIDRVVYDLNPNYTIPEEGDILKFNKSFESGNLRKVIQIRKNEYDLILNSDI  
NSNHYYHWFYFEVSGMRPGVAYRFNIINCEKSNSQFNQGMQPLMYSVQEALNARPWWRMGTDICYKKNH  
FSRSSVAAGGQKGSYYTITFTVNFPHKDDVCYFAYHYPTYSTLQMHLLQKLESAHNPQQIYFRKDVLC  
TLGNSCPLVTITAMPESNYYEHICHFRNRPYVFLSARVHPGETNASWVMKGTLEYLMSNNPTAQLRES  
YIFKIVPMLNPDGVINGNHRCSLSGEDLNRQWQSPSPDLHPTIYHAKGLLQYLAAVKRLPLVYCDYHGHS  
RKKNVFMYGCSIKETVWHTNDNATSCDVVEDTGYRTLKILSHIAPAFCMSSCSFVVEKSKESTARVWW  
REIGVQRSYTMESTLCGCDQGKYKGLQIGTRELEEMGAKFCVGLLRLKRLTSPLEYNLPSSLLDFENDLI  
ESSCKVTSPTTYVLDEDEPRFLEEVSYAESNDELDELIAENVGDYEPSAQEEVLSDELSRITYLP

TRTRPLEQKLISEEDLAANDILDYKDDDDKV

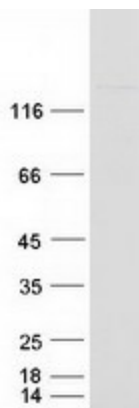
Tag:	C-Myc/DDK
Predicted MW:	133.7 kDa
Concentration:	>0.05 µg/µL as determined by microplate BCA method
Purity:	> 80% as determined by SDS-PAGE and Coomassie blue staining
Buffer:	25 mM Tris-HCl, 100 mM glycine, pH 7.3, 10% glycerol



[View online »](#)

<b>Preparation:</b>	Recombinant protein was captured through anti-DDK affinity column followed by conventional chromatography steps.
<b>Note:</b>	For testing in cell culture applications, please filter before use. Note that you may experience some loss of protein during the filtration process.
<b>Storage:</b>	Store at -80°C.
<b>Stability:</b>	Stable for 12 months from the date of receipt of the product under proper storage and handling conditions. Avoid repeated freeze-thaw cycles.
<b>RefSeq:</b>	<a href="#">NP_056054</a>
<b>Locus ID:</b>	23287
<b>UniProt ID:</b>	<a href="#">Q9UPW5</a> , <a href="#">A0A024R288</a>
<b>RefSeq Size:</b>	4436
<b>Cytogenetics:</b>	9q21.33
<b>RefSeq ORF:</b>	3558
<b>Synonyms:</b>	CCP1; CONDCA; NNA1
<b>Summary:</b>	NNA1 is a zinc carboxypeptidase that contains nuclear localization signals and an ATP/GTP-binding motif that was initially cloned from regenerating spinal cord neurons of the mouse. [supplied by OMIM, Jul 2002]
<b>Protein Families:</b>	Protease

### Product images:



Coomassie blue staining of purified AGTPBP1 protein (Cat# [TP309238]). The protein was produced from HEK293T cells transfected with AGTPBP1 cDNA clone (Cat# [RC209238]) using MegaTran 2.0 (Cat# [TT210002]).