

Product datasheet for **TP309222**

ENPP1 (NM_006208) Human Recombinant Protein

Product data:

| | |
|---------------------------------------|--|
| Product Type: | Recombinant Proteins |
| Description: | Recombinant protein of human ectonucleotide pyrophosphatase/phosphodiesterase 1 (ENPP1), 20 µg |
| Species: | Human |
| Expression Host: | HEK293T |
| Expression cDNA Clone or AA Sequence: | >RC209222 protein sequence Red =Cloning site Green =Tags(s) |

MDVGEEPLEKAARARTAKDPNTYKVLVSLVLSVCLTTLGCFGLKPSCAKEVKSCCKGRCFERTFGNCRC
DAACVELGNCCLDYQETCIEPEHIWTCNKFRGCEKRLTRSLCACSDDCCKDKGDCCINYSSVCQGEKSWVE
EPCESINEPQCPAGFETPPTLLFSLDGFRAEYLHTWGGLLPVISKLKCGTYKNMRPVYPTKTFPNHYS
IVTGLYPESHGIIDNKMYDPKMNASFSLKSKEKFNPEWYKGEPIWVTAKYQGLKSGTFFWPGSDVEINGI
FPDIYKMYNGSVPFEERILAVLQWLQLPKDERPHFYTLYLEEPDSSGHSYGPVSSEVIKALQRVDGMVGM
LMDGLKELNLHRCLNLILISDHGMEQGSCKKIYLNKYLGDVKNIKVIYGAARLRPSDVPDKYYSFNYE
GIARNLSCREPNQHFKPYLKHFLPKRLHFAKSDRIEPLTFYLDQPWQLALNPSEKCYCGSGFHGSDNVFS
NMQALFVGYGPGFKHGIEADTFENIEVYNLMCDLLNLTPAPNNGTHGSLNHLLKNPVYTPKHPKEVHPLV
QCPFTRNPRDNLGCSCNPSILPIEDFQTQFNLTVAEEKIHKHETLPYGRPRVLQKENTICLLSQHQFMSG
YSQDILMPLWTSYTVDRNDSFSTEDFSNCLYQDFRIPLSPVHKCSFYKNNTKVSYGFLSPPQLNKNSSGI
YSEALLTTNIVPMYQSFQVIWRYFHDTLLRKYAEERNGVNVVSGPVDFDYDGRCDLENLRQKRRVIRN
QEILIPTHFFIVLTSCKDTSQTPLHCENLDTLAFILPHRTDNSESCVHGKHDSSWVEELLMLHRARITDV
EHITGLSFYQQRKEPVSDILKCLKTHLPTFSQED

TRTRPLEQKLISEEDLAANDILDYKDDDDKV

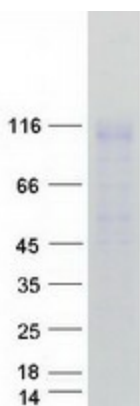
| | |
|----------------|--|
| Tag: | C-Myc/DDK |
| Predicted MW: | 99.8 kDa |
| Concentration: | >0.05 µg/µL as determined by microplate BCA method |
| Purity: | > 80% as determined by SDS-PAGE and Coomassie blue staining |
| Buffer: | 25 mM Tris-HCl, 100 mM glycine, pH 7.3, 10% glycerol |
| Preparation: | Recombinant protein was captured through anti-DDK affinity column followed by conventional chromatography steps. |



[View online »](#)

| | |
|--------------------------|---|
| Note: | For testing in cell culture applications, please filter before use. Note that you may experience some loss of protein during the filtration process. |
| Storage: | Store at -80°C. |
| Stability: | Stable for 12 months from the date of receipt of the product under proper storage and handling conditions. Avoid repeated freeze-thaw cycles. |
| RefSeq: | NP_006199 |
| Locus ID: | 5167 |
| UniProt ID: | P22413 |
| RefSeq Size: | 7442 |
| Cytogenetics: | 6q23.2 |
| RefSeq ORF: | 2619 |
| Synonyms: | ARHR2; COLED; M6S1; NPP1; NPPS; PC-1; PCA1; PDNP1 |
| Summary: | This gene is a member of the ecto-nucleotide pyrophosphatase/phosphodiesterase (ENPP) family. The encoded protein is a type II transmembrane glycoprotein comprising two identical disulfide-bonded subunits. This protein has broad specificity and cleaves a variety of substrates, including phosphodiester bonds of nucleotides and nucleotide sugars and pyrophosphate bonds of nucleotides and nucleotide sugars. This protein may function to hydrolyze nucleoside 5' triphosphates to their corresponding monophosphates and may also hydrolyze diadenosine polyphosphates. Mutations in this gene have been associated with 'idiopathic' infantile arterial calcification, ossification of the posterior longitudinal ligament of the spine (OPLL), and insulin resistance. [provided by RefSeq, Jul 2008] |
| Protein Families: | Druggable Genome, Transmembrane |
| Protein Pathways: | Metabolic pathways, Nicotinate and nicotinamide metabolism, Pantothenate and CoA biosynthesis, Purine metabolism, Riboflavin metabolism, Starch and sucrose metabolism |

Product images:



Coomassie blue staining of purified ENPP1 protein (Cat# TP309222). The protein was produced from HEK293T cells transfected with ENPP1 cDNA clone (Cat# [RC209222]) using MegaTran 2.0 (Cat# [TT210002]).