

Product datasheet for TP309220L

C6orf97 (CCDC170) (NM_025059) Human Recombinant Protein

Product data:

Product Type:	Recombinant Proteins
Description:	Recombinant protein of human chromosome 6 open reading frame 97 (C6orf97), 1 mg
Species:	Human
Expression Host:	HEK293T
Expression cDNA Clone or AA Sequence:	>RC209220 protein sequence Red=Cloning site Green=Tags(s)

MSLDCTSHIALGAASPAPEETYDHLSEVPVTREQLNHYRNVAQNARSELAATLVKFCAQSELQDLRSMK
LSKEVSCQELKAEMESYKENNARKSSLLTSLRDRVQLEEEESAALSTSKIRTEITAHAAIKENQELKKKV
VELNEKLQKCSKENEENKKQVSKNCRKHEEFLTQLRDCLDPDERNDKASDEDLILKLRDLRKENEFVKGGQ
IVILEETINVHEMEAKASRETIMRLASEVNRQKKAASCTEEKEKLNQDLLSAVEAKEALEREVKIFQER
LLAGQQVWDASKQEVSLLKKSSSELEKSLKASQDAVTTSSQSYFSFREKITALLRGRLSMTGSTEDTILE
KIREMDSREESRDRMVSQLAQISELVEQLGKESGFHQKALQRAQKAENMLETLOGQLTHLEAEVSGGV
LRDNLNFEKQKYLKFLDQLSQMKMLDQMAAELGFDMLDQVVLARTEQLVRLESNAVIENKTIHNLQRKL
KTQKERLESKELHMSLLRQKIAQLEEEKQARTALVVERDNAHLTIRNLQKKVERLQKELNTRDLHTELK
AKLADTNELKIKTLEQTKAIEDLNKSRDQLEKMKKEAEKMLMSVKSELDTTEHEAKENKERARNMIEVVT
SEMKTLLKKSLEEAEREKQLADFREVSQMLGLNVTSLALPDYEIHKCLERLIHSHQHFFVTCACLKDV
TGQERHPQGHLQLLH

TRTRPLEQKLISEEDLAANDILDYKDDDDKV

Tag:	C-Myc/DDK
Predicted MW:	82.1 kDa
Concentration:	>0.05 µg/µL as determined by microplate BCA method
Purity:	> 80% as determined by SDS-PAGE and Coomassie blue staining
Buffer:	25 mM Tris-HCl, 100 mM glycine, pH 7.3, 10% glycerol
Preparation:	Recombinant protein was captured through anti-DDK affinity column followed by conventional chromatography steps.
Note:	For testing in cell culture applications, please filter before use. Note that you may experience some loss of protein during the filtration process.
Storage:	Store at -80°C.



[View online »](#)

Stability: Stable for 12 months from the date of receipt of the product under proper storage and handling conditions. Avoid repeated freeze-thaw cycles.

RefSeq: [NP_079335](#)

Locus ID: 80129

UniProt ID: [Q8IYT3](#)

RefSeq Size: 5283

Cytogenetics: 6q25.1

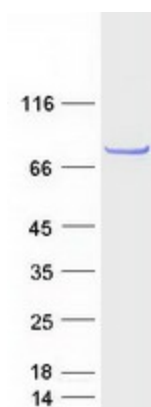
RefSeq ORF: 2145

Synonyms: bA282P11.1; C6orf97

Summary: The function of this gene and its encoded protein is not known. Several genome-wide association studies have implicated the region around this gene to be involved in breast cancer and bone mineral density, but no link to this specific gene has been found. [provided by RefSeq, May 2010]

Protein Families: Druggable Genome

Product images:



Coomassie blue staining of purified CCDC170 protein (Cat# [TP309220]). The protein was produced from HEK293T cells transfected with CCDC170 cDNA clone (Cat# [RC209220]) using MegaTran 2.0 (Cat# [TT210002]).