

Product datasheet for **TP309220**

C6orf97 (CCDC170) (NM_025059) Human Recombinant Protein

Product data:

Product Type: Recombinant Proteins

Description: Recombinant protein of human chromosome 6 open reading frame 97 (C6orf97), 20 µg

Species: Human

Expression Host: HEK293T

Expression cDNA Clone or AA Sequence: >RC209220 protein sequence
Red=Cloning site **Green**=Tags(s)

MSLDCTSHIALGAASPAPEETYDHLSEVPVTREQLNHYRNVAQNARSELAATLVKFCAQSELQDLRSKM
LSKEVSCQELKAEMESYKNNARKSSLLTSLRDRVQEEESAAALSTSKIRTEITAHAAIKENQELKKKV
VELNEKLQKCSKENEENKKQVSKNCRKHEEFLTQLRDCLDPDERNDKASDEDLILKLRDLRKENEFVKQG
IVILEETINVHEMEAKASRETIMRLASEVNRQKKAASCTEEKEKLNQDLLSAVEAKEALEREVKIFQER
LLAGQQVWDASKQEVSLKKSSSELEKSLKASQDAVTTSSQSYFSFREKITALLRGRLSMTGSTEDTILE
KIREMDSREESRDRMVSQLAQISELVEQLGKESGFHQKALQRAQKAENMLETQGQLTHLEAELVSGGV
LRDNLNFEKQKYLKFLDQLSQMKMLDQMAAELGFDMLDVVLARTEQLVRLESNAVIENKTIAHNLQRKL
KTQKERLESKELHMSLLRQKIAQLEEEKQARTALVVERDNAHLTIRNLQKKVERLQKELNTRCDLHTELK
AKLADTNELKIKTLEQTKAIEDLNKSRDQLEKMKKEAEKKLMSVKSELDTEHEAKENKERARNMIEVVT
SEMKTLLKKSLEAEKREKQLADFREVVSQLGLNVTSLALPDYEIICKLERLIHSHQHVFVTCACLKDV
TGQERHPQGHLQLLH

TRTRPLEQKLISEEDLAANDILDYKDDDDKV

Tag: C-Myc/DDK

Predicted MW: 82.1 kDa

Concentration: >0.05 µg/µL as determined by microplate BCA method

Purity: > 80% as determined by SDS-PAGE and Coomassie blue staining

Buffer: 25 mM Tris-HCl, 100 mM glycine, pH 7.3, 10% glycerol

Preparation: Recombinant protein was captured through anti-DDK affinity column followed by conventional chromatography steps.

Note: For testing in cell culture applications, please filter before use. Note that you may experience some loss of protein during the filtration process.

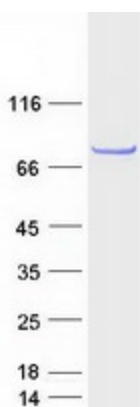
Storage: Store at -80°C.



[View online »](#)

Stability:	Stable for 12 months from the date of receipt of the product under proper storage and handling conditions. Avoid repeated freeze-thaw cycles.
RefSeq:	<u>NP_079335</u>
Locus ID:	80129
UniProt ID:	<u>Q8IYT3</u>
RefSeq Size:	5283
Cytogenetics:	6q25.1
RefSeq ORF:	2145
Synonyms:	bA282P11.1; C6orf97
Summary:	The function of this gene and its encoded protein is not known. Several genome-wide association studies have implicated the region around this gene to be involved in breast cancer and bone mineral density, but no link to this specific gene has been found. [provided by RefSeq, May 2010]
Protein Families:	Druggable Genome

Product images:



Coomassie blue staining of purified CCDC170 protein (Cat# TP309220). The protein was produced from HEK293T cells transfected with CCDC170 cDNA clone (Cat# [RC209220]) using MegaTran 2.0 (Cat# [TT210002]).