

## Product datasheet for TP309201M

### COLEC12 (NM\_130386) Human Recombinant Protein

#### Product data:

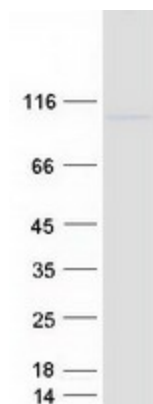
<b>Product Type:</b>	Recombinant Proteins
<b>Description:</b>	Recombinant protein of human collectin sub-family member 12 (COLEC12), 100 µg
<b>Species:</b>	Human
<b>Expression Host:</b>	HEK293T
<b>Expression cDNA Clone or AA Sequence:</b>	>RC209201 protein sequence Red=Cloning site Green=Tags(s)
	<p>MKDDFAEEEEVQSFQYKRFQIQEGTQCTKCKNNWALKFSIILLYILCALLTITVAILGYKVEKMDNVTG            GMETSRQTYDDKLTAVESDLEKLGDQTGKKAISTNSELSTFRSDILDLRQQLREITEKTSKNKDTLEKLQ            ASGDALVDRQSQLKETLENNSFLITTVNKTQAYNGYVTNLQQDTSVLQGNLQNMYSHNVIMNLNNLN            LTQVQQRNLITNLQRSVDDTSQAIQRIKNDFQNLQVFLQAKKDTDWLKEKVQSLQTLAANNSALAKANN            DTLEDMNSQLNSFTGQMENITTISQANEQNLKDLQDLHKDAENRTAIKFNQLEERFQLFETDIVNIISNI            SYTAHHLRRLTSLNNEVRTTCTDTLTKHTDDLTSLNNTLANIRLDSVSLRMQQDLMRSRLDTEVANLSVI            MEEMKLVDSKHGQLIKNFTILQPPPGRGPRGDRGSQGGPGPTGNKGQKGEKGEPPGPPGAGERGPIGA            GPPGERGGKSGKSGSQGPKGSRGSPGKPGPQGPSGDPGPPGPPGKEGLPGPQGGPFQGLQGTGVEPGVPG            PRGLPGLPGVPGMPGPKGPPGPPGSPGAVVPLALQNEPTAPEDNSCPPHWKNFTDKCYFYSVEKEIFED            AKLFCEDKSSHLVFINTREEQQWIKKQMVGRSHWIGLTDSERENWKWLDGTSPDYKNWKAGQPDNWDGH            GHGPGEDCAGLIYAGQWDFQCEDVNNFICEKDRETVLSSAL</p> <p>TRTRPLEQKLISEEDLAANDILDYKDDDDKV</p>
<b>Tag:</b>	C-Myc/DDK
<b>Predicted MW:</b>	81.3 kDa
<b>Concentration:</b>	>0.05 µg/µL as determined by microplate BCA method
<b>Purity:</b>	> 80% as determined by SDS-PAGE and Coomassie blue staining
<b>Buffer:</b>	25 mM Tris-HCl, 100 mM glycine, pH 7.3, 10% glycerol
<b>Preparation:</b>	Recombinant protein was captured through anti-DDK affinity column followed by conventional chromatography steps.
<b>Note:</b>	For testing in cell culture applications, please filter before use. Note that you may experience some loss of protein during the filtration process.
<b>Storage:</b>	Store at -80°C.



[View online »](#)

<b>Stability:</b>	Stable for 12 months from the date of receipt of the product under proper storage and handling conditions. Avoid repeated freeze-thaw cycles.
<b>RefSeq:</b>	<a href="#">NP_569057</a>
<b>Locus ID:</b>	81035
<b>UniProt ID:</b>	<a href="#">Q5KU26</a>
<b>RefSeq Size:</b>	3134
<b>Cytogenetics:</b>	18p11.32
<b>RefSeq ORF:</b>	2226
<b>Synonyms:</b>	CLP1; NSR2; SCARA4; SRCL
<b>Summary:</b>	This gene encodes a member of the C-lectin family, proteins that possess collagen-like sequences and carbohydrate recognition domains. This protein is a scavenger receptor that displays several functions associated with host defense. It can bind to carbohydrate antigens on microorganisms, facilitating their recognition and removal. It also mediates the recognition, internalization, and degradation of oxidatively modified low density lipoprotein by vascular endothelial cells. [provided by RefSeq, May 2018]
<b>Protein Families:</b>	Transmembrane

### Product images:



Coomassie blue staining of purified COLEC12 protein (Cat# [TP309201]). The protein was produced from HEK293T cells transfected with COLEC12 cDNA clone (Cat# [RC209201]) using MegaTran 2.0 (Cat# [TT210002]).