

Product datasheet for TP309201

COLEC12 (NM_130386) Human Recombinant Protein

Product data:

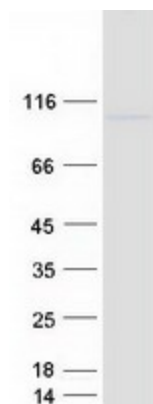
Product Type:	Recombinant Proteins
Description:	Recombinant protein of human collectin sub-family member 12 (COLEC12), 20 µg
Species:	Human
Expression Host:	HEK293T
Expression cDNA Clone or AA Sequence:	>RC209201 protein sequence Red=Cloning site Green=Tags(s)
	<p>MKDDFAEEEEVQSFQYKRFQIQEGTQCTKCKNNWALKFSIILLYILCALLTITVAILGYKVEKMDNVTG GMETSRQTYDDKLTAVESDLEKLDGDTGKKAISTNSELSTFRSDILDLRQQLREITEKTSKNKDTLEKQ ASGDALVDRQSQLKETLENNSFLITTVNKTQAYNGYVTNLQQDTSVLQGNLQNMYSHNVIMNLNNLN LTQVQQRNLITNLQRSVDDTSQAIQRIKNDQNLQVFLQAKKDTDWLKEKVQSLQTLAANNSALAKANN DTLEDMNSQLNSFTGQMENITTISQANEQNLKDLQDLHKDAENRTAIKFNQLEERFQLFETDIVNIISNI SYTAHHLRRLTSLNNEVRTTCTDTLTKHTDDLTLNNTLANIRLDSVSLRMQQDLMRSRLDTEVANLSVI MEEMKLVDSKHGQLIKNFTILQPPPGRGPRGDRGSQGGPGTGNKGQKGEKGEPPGPPGAGERGPIGA GPPGERGGKSGKSGSQGPKGSRGSPGKPGPQGPSGDPGPPGPPGKEGLPGPQGGPFQGLQGTGVEPGVPG PRGLPGLPGVPGMPGPKGPPGPPGSPGAVVPLALQNEPTAPEDNSCPPHWNFTDKCYFYSVEKEIFED AKLFCEDKSSHLVFINTREEQQWIKKQMVGRSHWIGLTDSERENWKWLDGTSPDYKNWKAGQPDNWDGH GHGPGEDCAGLIYAGQWDFQCEDVNNFICEKDRETVLSSAL</p> <p>TRTRPLEQKLISEEDLAANDILDYKDDDDKV</p>
Tag:	C-Myc/DDK
Predicted MW:	81.3 kDa
Concentration:	>0.05 µg/µL as determined by microplate BCA method
Purity:	> 80% as determined by SDS-PAGE and Coomassie blue staining
Buffer:	25 mM Tris-HCl, 100 mM glycine, pH 7.3, 10% glycerol
Preparation:	Recombinant protein was captured through anti-DDK affinity column followed by conventional chromatography steps.
Note:	For testing in cell culture applications, please filter before use. Note that you may experience some loss of protein during the filtration process.
Storage:	Store at -80°C.



[View online »](#)

Stability:	Stable for 12 months from the date of receipt of the product under proper storage and handling conditions. Avoid repeated freeze-thaw cycles.
RefSeq:	NP_569057
Locus ID:	81035
UniProt ID:	Q5KU26
RefSeq Size:	3134
Cytogenetics:	18p11.32
RefSeq ORF:	2226
Synonyms:	CLP1; NSR2; SCARA4; SRCL
Summary:	This gene encodes a member of the C-lectin family, proteins that possess collagen-like sequences and carbohydrate recognition domains. This protein is a scavenger receptor that displays several functions associated with host defense. It can bind to carbohydrate antigens on microorganisms, facilitating their recognition and removal. It also mediates the recognition, internalization, and degradation of oxidatively modified low density lipoprotein by vascular endothelial cells. [provided by RefSeq, May 2018]
Protein Families:	Transmembrane

Product images:



Coomassie blue staining of purified COLEC12 protein (Cat# TP309201). The protein was produced from HEK293T cells transfected with COLEC12 cDNA clone (Cat# [RC209201]) using MegaTran 2.0 (Cat# [TT210002]).