

Product datasheet for **TP309200M**

IP3KC (ITPKC) (NM_025194) Human Recombinant Protein

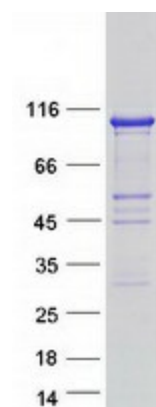
Product data:

| | |
|---------------------------------------|---|
| Product Type: | Recombinant Proteins |
| Description: | Recombinant protein of human inositol 1,4,5-trisphosphate 3-kinase C (ITPKC), 100 µg |
| Species: | Human |
| Expression Host: | HEK293T |
| Expression cDNA Clone or AA Sequence: | >RC209200 protein sequence Red =Cloning site Green =Tags(s) MRRCPCRGSLNEAEAGALPAAARMGLEAPRGRRRRQPGQQRPGPGAGAPAGRPEGGGPWARTEGSSL HSE PERAGLGPAWGTESPQAEFWTDGQTEPAAAGLVETERPKQKTEPDRSSLRTHLEWSWSELETTCLWTET GTDGLWTDPHRSDLQFQPEEASPWTQPGVHGPWTELETHGSQTQPERVKSADNLWTHQNSSSLQT HPEG ACPSKEPSADGSWKELYTDGSRTQQDIEGPWTEPYTDGSQKKQDTEAARKQPGTGGFQIQDTDGSWTQ P STDGSQTAPGTDCLLGEPEDEGPLEEPEPGELLTHLYSHLKCSPLCPVRLIITPETPEPEAQVGPSPSRV EGGSGGFSSASSFDESEDDVAGGGGASDPEDRSGSKPWKKLTKVLYSPFVVSFRKHYPWWQLSGHAGN FQAGEDGRILKRFCQCEQRSLEQLMKDPLRPFPAYYGMVLQDQGTQFNQMEDLLADFEGPSIMDCKMG SR TYLEELVKARERPRPRKDMYEKMAVDPGAPTPEEHAQGAVTKPRYMQWRETMSSTSTLGFRIEIGIKKA DGTGNTNFKKTQALEQVTKVLEDFVDGDHVLQKYVACLEELREALEISPFKTHEVVGSSLLFVHDHTG LAKVWMIDFGKTVALPDHQTLSHRLPWAEGNREDGYLWGLDNMICLLQGLAQS TR TRPLEQKLISEEDLAANDILDYKDDDDKV |
| Tag: | C-Myc/DDK |
| Predicted MW: | 75 kDa |
| Concentration: | >0.05 µg/µL as determined by microplate BCA method |
| Purity: | > 80% as determined by SDS-PAGE and Coomassie blue staining |
| Buffer: | 25 mM Tris-HCl, 100 mM glycine, pH 7.3, 10% glycerol |
| Preparation: | Recombinant protein was captured through anti-DDK affinity column followed by conventional chromatography steps. |


[View online »](#)

| | |
|--------------------------|--|
| Note: | For testing in cell culture applications, please filter before use. Note that you may experience some loss of protein during the filtration process. |
| Storage: | Store at -80°C. |
| Stability: | Stable for 12 months from the date of receipt of the product under proper storage and handling conditions. Avoid repeated freeze-thaw cycles. |
| RefSeq: | NP_079470 |
| Locus ID: | 80271 |
| UniProt ID: | Q96DU7 |
| RefSeq Size: | 3398 |
| Cytogenetics: | 19q13.2 |
| RefSeq ORF: | 2049 |
| Synonyms: | IP3-3KC; IP3KC |
| Summary: | This gene encodes a member of the inositol 1,4,5-trisphosphate [Ins(1,4,5)P(3)] 3-kinase family of enzymes that catalyze the phosphorylation of inositol 1,4,5-trisphosphate to 1,3,4,5-tetrakisphosphate. The encoded protein is localized to the nucleus and cytoplasm and has both nuclear import and nuclear export activity. Single nucleotide polymorphisms in this gene are associated with Kawasaki disease.[provided by RefSeq, Sep 2009] |
| Protein Families: | Druggable Genome |

Product images:



Coomassie blue staining of purified ITPKC protein (Cat# [TP309200]). The protein was produced from HEK293T cells transfected with ITPKC cDNA clone (Cat# [RC209200]) using MegaTran 2.0 (Cat# [TT210002]).