

Product datasheet for **TP309200L**

IP3KC (ITPKC) (NM_025194) Human Recombinant Protein

Product data:

Product Type:	Recombinant Proteins
Description:	Recombinant protein of human inositol 1,4,5-trisphosphate 3-kinase C (ITPKC), 1 mg
Species:	Human
Expression Host:	HEK293T
Expression cDNA Clone or AA Sequence:	>RC209200 protein sequence Red =Cloning site Green =Tags(s)

MRRCPCRGSLNEAEAGALPAAARMGLEAPRGRRRRQPGQQRPGPGAGAPAGRPEGGGPWARTEGSSL
 HSE
 PERAGLGPAAGTESPQAEFWTDGQTEPAAAGLVETERPKQKTEPDRSSLRTHLEWSWSELETTCLWTET
 GTDGLWTDPHRSDLQFQPEEASPWTQPGVHGPWTELETHGSQTQPERVKSADNLWTHQNSSSLQT
 HPEG
 ACPSKEPSADGSWKELYTDGSRTQQDIEGPWTEPYTDGSQKKQDTEAARKQPGTGGFQIQDTDGSWTQ
 P
 STDGSQTAPGTDCLLGEPEDEGPLEEPEPGELLTHLYSHLKCSPLCPVRLIITPETPEPEAQVGPSPSRV
 EGGSGGFSSASSFDESEDDVAGGGGASDPEDRSGSKPWKKLTKVLYKSPFVVSFRKHYPWWQLSGHAGN
 FQAGEDGRILKRFCQCEQRSLEQLMKDPLRPFPAYYGMVLQDGTQFNQMEDLLADFEGPSIMDCKMG
 SR
 TYLEELVKARERPRPRKDMYEKMVAVDPGAPTPEEHAQGAVTKPRYMQWRETMSSTSTLGFRIEGIKKA
 DGT CNTNFKKTQALEQVTKVLEDFVDGDHVLQKYVACLEELREALEISPFKTHEVVGSSLLFVHDHTG
 LAKVWMIDFGKTVALPDHQTLSHRLPWAEGNREDGYLWGLDNMICLLQGLAQS

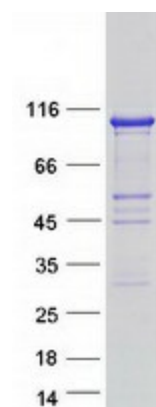
TRTRPLEQKLISEEDLAANDILDYKDDDDKV

Tag:	C-Myc/DDK
Predicted MW:	75 kDa
Concentration:	>0.05 µg/µL as determined by microplate BCA method
Purity:	> 80% as determined by SDS-PAGE and Coomassie blue staining
Buffer:	25 mM Tris-HCl, 100 mM glycine, pH 7.3, 10% glycerol
Preparation:	Recombinant protein was captured through anti-DDK affinity column followed by conventional chromatography steps.


[View online »](#)

Note:	For testing in cell culture applications, please filter before use. Note that you may experience some loss of protein during the filtration process.
Storage:	Store at -80°C.
Stability:	Stable for 12 months from the date of receipt of the product under proper storage and handling conditions. Avoid repeated freeze-thaw cycles.
RefSeq:	NP_079470
Locus ID:	80271
UniProt ID:	Q96DU7
RefSeq Size:	3398
Cytogenetics:	19q13.2
RefSeq ORF:	2049
Synonyms:	IP3-3KC; IP3KC
Summary:	This gene encodes a member of the inositol 1,4,5-trisphosphate [Ins(1,4,5)P(3)] 3-kinase family of enzymes that catalyze the phosphorylation of inositol 1,4,5-trisphosphate to 1,3,4,5-tetrakisphosphate. The encoded protein is localized to the nucleus and cytoplasm and has both nuclear import and nuclear export activity. Single nucleotide polymorphisms in this gene are associated with Kawasaki disease.[provided by RefSeq, Sep 2009]
Protein Families:	Druggable Genome

Product images:



Coomassie blue staining of purified ITPKC protein (Cat# [TP309200]). The protein was produced from HEK293T cells transfected with ITPKC cDNA clone (Cat# [RC209200]) using MegaTran 2.0 (Cat# [TT210002]).