

Product datasheet for **TP309200**

IP3KC (ITPKC) (NM_025194) Human Recombinant Protein

Product data:

Product Type: Recombinant Proteins

Description: Recombinant protein of human inositol 1,4,5-trisphosphate 3-kinase C (ITPKC), 20 µg

Species: Human

Expression Host: HEK293T

Expression cDNA >RC209200 protein sequence

Clone or AA **Red**=Cloning site **Green**=Tags(s)

Sequence:

MRRPCRGSLNEAEAGALPAAARMGLEAPRGGRRRQPGQQRPGGAGAPAGRPEGGGPWARTEGSSLHSE
PERAGLG PAPGTES PQAEFWTDGQTEPAAAGLGVETERPKQKTEPDRSSLRTHLEWSWSELETTCLWTET
GTDGLWTDPHRSDLQFQPEEASPWTQPGVHGPWTELETHGSQTQPERVKSADNLWTHQNSSSLQTHPEG
ACPSKEPSADGSWKELYTDGSRTQQDIEGPWTEPYTDGSQKKQDTEAARKQPGTGGFQIQQD TDGSWTQP
STDGSQTAPGTDCLLGEPEDEGPLEEPEPGELLTHLYSHLKCSP LCPVPRLIITPETPEPEAQVGPSSRV
EGGSGGFSSASSFDESEDDWAGGGGASDPEDRSGSKPWKKLTKVLKYS PFVVSFRKHYPWVQLSGHAGN
FQAGEDGRILKRFCQCEQRSLEQLMKDPLRPFVPAYYGMVLQDGGTFNQMEDLLADFEGPSIMDCKMGRS
TYLEEELVKARERPRPRKDMYEKMAVDPGAPTPEEHAQGAVTKPRYM QWRETMSSTSTLGFRIEGIKKA
DGT CNTNFKKTQALEQVTKVLEDFVDGDHVLQKYVACLEELREALEISPFKTHEVVGSSLLFVHDHTG
LAKVWMIDFGKTVALPDHQTLSHRLPWAEGNREDGYLWGLDNMICLLQGLAQS

TRTRPLEQKLISEEDLAANDILDYKDDDDKV

Tag: C-Myc/DDK

Predicted MW: 75 kDa

Concentration: >0.05 µg/µL as determined by microplate BCA method

Purity: > 80% as determined by SDS-PAGE and Coomassie blue staining

Buffer: 25 mM Tris-HCl, 100 mM glycine, pH 7.3, 10% glycerol

Preparation: Recombinant protein was captured through anti-DDK affinity column followed by conventional chromatography steps.

Note: For testing in cell culture applications, please filter before use. Note that you may experience some loss of protein during the filtration process.

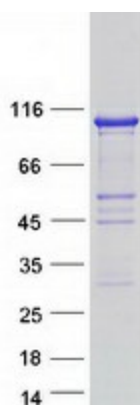
Storage: Store at -80°C.



[View online »](#)

Stability:	Stable for 12 months from the date of receipt of the product under proper storage and handling conditions. Avoid repeated freeze-thaw cycles.
RefSeq:	NP_079470
Locus ID:	80271
UniProt ID:	Q96DU7 , A8MUS2 , A0A024R0N8
RefSeq Size:	3398
Cytogenetics:	19q13.2
RefSeq ORF:	2049
Synonyms:	IP3-3KC; IP3KC
Summary:	This gene encodes a member of the inositol 1,4,5-trisphosphate [Ins(1,4,5)P(3)] 3-kinase family of enzymes that catalyze the phosphorylation of inositol 1,4,5-trisphosphate to 1,3,4,5-tetrakisphosphate. The encoded protein is localized to the nucleus and cytoplasm and has both nuclear import and nuclear export activity. Single nucleotide polymorphisms in this gene are associated with Kawasaki disease.[provided by RefSeq, Sep 2009]
Protein Families:	Druggable Genome

Product images:



Coomassie blue staining of purified ITPKC protein (Cat# TP309200). The protein was produced from HEK293T cells transfected with ITPKC cDNA clone (Cat# [RC209200]) using MegaTran 2.0 (Cat# [TT210002]).