

## Product datasheet for **TP309159**

### **RAB43 (NM\_198490) Human Recombinant Protein**

#### Product data:

Product Type: Recombinant Proteins

Description: Recombinant protein of human RAB43, member RAS oncogene family (RAB43), 20 µg

Species: Human

Expression Host: HEK293T

Expression cDNA Clone  
or AA Sequence: >RC209159 protein sequence  
**Red**=Cloning site **Green**=Tags(s)

MAGPGPGPGDPDEQYDFLFLVVGDASVGKTCVQRFKGTAFSERQGSTIGVDFTMKTLEIQGKRVKLQ  
IWDTAGQERFRTITQSYRSANGAILAYDITKRSSFSLVPHWIEDVRKYAGSNIVQLLIGNKSDLSELRE  
VSLAEAQSLAEHYDILCAIETSAKDSSNVVEAFLRVATELIMRHGGPLFSEKSPDHIQLNSKDIGEGWGC  
GC

**TRTRPLEQKLISEEDLAANDILDYKDDDDKV**

Tag: C-Myc/DDK

Predicted MW: 23.2 kDa

Concentration: >0.05 µg/µL as determined by microplate BCA method

Purity: > 80% as determined by SDS-PAGE and Coomassie blue staining

Buffer: 25 mM Tris-HCl, 100 mM glycine, pH 7.3, 10% glycerol

Preparation: Recombinant protein was captured through anti-DDK affinity column followed by conventional chromatography steps.

Note: For testing in cell culture applications, please filter before use. Note that you may experience some loss of protein during the filtration process.

Storage: Store at -80°C.

Stability: Stable for 12 months from the date of receipt of the product under proper storage and handling conditions. Avoid repeated freeze-thaw cycles.

RefSeq: [NP\\_940892](#)

Locus ID: 339122

UniProt ID: [Q86YS6](#)



[View online »](#)

RefSeq Size: 4498

Cytogenetics: 3q21.3

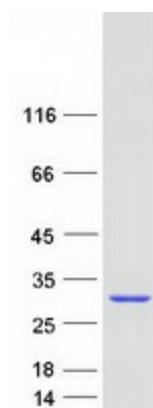
RefSeq ORF: 636

Synonyms: RAB11B; RAB41

**Summary:** The small GTPases Rab are key regulators of intracellular membrane trafficking, from the formation of transport vesicles to their fusion with membranes. Rabs cycle between an inactive GDP-bound form and an active GTP-bound form that is able to recruit to membranes different set of downstream effectors directly responsible for vesicle formation, movement, tethering and fusion. The low intrinsic GTPase activity of RAB43 is activated by USP6NL. Involved in retrograde transport from the endocytic pathway to the Golgi apparatus. Involved in the transport of Shiga toxin from early and recycling endosomes to the trans-Golgi network. Required for the structural integrity of the Golgi complex. Plays a role in the maturation of phagosomes that engulf pathogens, such as *S.aureus* and *M.tuberculosis*. [UniProtKB/Swiss-Prot Function]

**Protein Families:** Druggable Genome

### Product images:



Coomassie blue staining of purified RAB43 protein (Cat# TP309159). The protein was produced from HEK293T cells transfected with RAB43 cDNA clone (Cat# [RC209159]) using MegaTran 2.0 (Cat# [TT210002]).