

Product datasheet for **TP309147L**

CSN1 (GPS1) (NM_212492) Human Recombinant Protein

Product data:

Product Type:	Recombinant Proteins
Description:	Recombinant protein of human G protein pathway suppressor 1 (GPS1), transcript variant 1, 1 mg
Species:	Human
Expression Host:	HEK293T
Expression cDNA Clone or AA Sequence:	>RC209147 protein sequence Red =Cloning site Green =Tags(s)

MRDSSAPSSASSSVTDLYCTPHSSRSDLVLPGTAGDFLSASLSACTLLYEGAVEPMQIDVDPQEDPQNA
PDVNYVVENPSLDLEQYAASYSGLMRIERLQFIADHCPTLRVEALKMALSFVQRTFNVDMEYEEIHRKLSE
ATRELQNAPDAIPESGVEPPALDTAWVEATRKKALLKLEKLDLTKNYKGNISIKESIRRGHDDLGDHYLD
CGDLSNALKCYSRARDYCTSAKHVINMCLNVIKVSVYLQNSHVLVSYSKAESTPEIAEQRGERDSQTQA
ILTKLKCAAGLAELAARKYKQAAKCLLLASFDHCDPFELLSPSNVAIYGGLCALATFDRQELQRNVISSS
SFKLFLELEPQVRDIIFKFYESKYASCLKMLDEMKNLLLDMYLAPHVRTLYTQIRNRALIQYFSPYVSA
DMHRMAAAFNTTVAALEDELTLILEGLISARVDSHSKILYARDVDQRSTTFEKSLLMGKEFQRRAKAMM
LRAAVLRNQIHVKSPPREGSQGELTPANSQSRMSTNM

TRTRPLEQKLISEEDLAANDILDYKDDDDKV

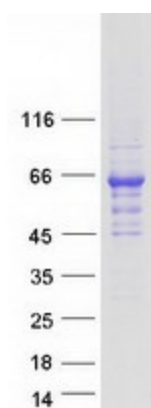
Tag:	C-Myc/DDK
Predicted MW:	58.9 kDa
Concentration:	>0.05 µg/µL as determined by microplate BCA method
Purity:	> 80% as determined by SDS-PAGE and Coomassie blue staining
Buffer:	25 mM Tris-HCl, 100 mM glycine, pH 7.3, 10% glycerol
Preparation:	Recombinant protein was captured through anti-DDK affinity column followed by conventional chromatography steps.
Note:	For testing in cell culture applications, please filter before use. Note that you may experience some loss of protein during the filtration process.
Storage:	Store at -80°C.



[View online »](#)

Stability:	Stable for 12 months from the date of receipt of the product under proper storage and handling conditions. Avoid repeated freeze-thaw cycles.
RefSeq:	NP_997657
Locus ID:	2873
UniProt ID:	Q13098
RefSeq Size:	2363
Cytogenetics:	17q25.3
RefSeq ORF:	1581
Synonyms:	COPS1; CSN1; SGN1
Summary:	This gene is known to suppress G-protein and mitogen-activated signal transduction in mammalian cells. The encoded protein shares significant similarity with Arabidopsis FUS6, which is a regulator of light-mediated signal transduction in plant cells. [provided by RefSeq, Mar 2016]
Protein Families:	Druggable Genome

Product images:



Coomassie blue staining of purified GPS1 protein (Cat# [TP309147]). The protein was produced from HEK293T cells transfected with GPS1 cDNA clone (Cat# [RC209147]) using MegaTran 2.0 (Cat# [TT210002]).