

## Product datasheet for TP309147

### CSN1 (GPS1) (NM\_212492) Human Recombinant Protein

#### Product data:

Product Type:	Recombinant Proteins
Description:	Recombinant protein of human G protein pathway suppressor 1 (GPS1), transcript variant 1, 20 µg
Species:	Human
Expression Host:	HEK293T
Expression cDNA Clone or AA Sequence:	>RC209147 protein sequence Red=Cloning site Green=Tags(s)

MRDSSAPSSASSSVTDLYCTPHSSRSDLVLPGTAGDFLSASLSACTLLYEGAVEPMQIDVDPQEDPQNA  
PDVNYVVENPSLDLEQYAASYSGLMRIERLQFIADHCPTLRVEALKMALSFVQRTFNVDMYEEIHRKLSE  
ATRELQNAPDAIPESGVEPPALDTAWVEATRKKALLKLEKLDLTKNYKGNISIKESIRRGHDDLGDHYLD  
CGDLSNALKCYSRARDYCTSAKHVINMCLNVIKVSVYLQNSHVLVSVKAESTPEIAEQRGERDSQTQA  
ILTKLKCAAGLAELAARKYKQAAKCLLLASFDHCDPPELLSPSNVAIYGGLCALATFDRQELQRNVISSS  
SFKLFLELEPQVRDIIFKFYESKYASCLKMLDEMKNLLLDMYLAPHVRTLYTQIRNRALIQYFSPYVSA  
DMHRMAAAFNTTVAALEDELTLQILEGLISARVDSHSHKILYARDVDQRSTTFEKSLLMGKEFQRRAKAMM  
LRAAVLRNQIHVKSPPREGSQGELTPANSQSRMSTNM

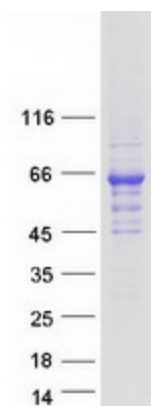
TRTRPLEQKLISEEDLAANDILDYKDDDDKV

Tag:	C-Myc/DDK
Predicted MW:	58.9 kDa
Concentration:	>0.05 µg/µL as determined by microplate BCA method
Purity:	> 80% as determined by SDS-PAGE and Coomassie blue staining
Buffer:	25 mM Tris-HCl, 100 mM glycine, pH 7.3, 10% glycerol
Preparation:	Recombinant protein was captured through anti-DDK affinity column followed by conventional chromatography steps.
Note:	For testing in cell culture applications, please filter before use. Note that you may experience some loss of protein during the filtration process.
Storage:	Store at -80°C.



[View online »](#)

<b>Stability:</b>	Stable for 12 months from the date of receipt of the product under proper storage and handling conditions. Avoid repeated freeze-thaw cycles.
<b>RefSeq:</b>	<a href="#">NP_997657</a>
<b>Locus ID:</b>	2873
<b>UniProt ID:</b>	<a href="#">Q13098</a>
<b>RefSeq Size:</b>	2363
<b>Cytogenetics:</b>	17q25.3
<b>RefSeq ORF:</b>	1581
<b>Synonyms:</b>	COPS1; CSN1; SGN1
<b>Summary:</b>	This gene is known to suppress G-protein and mitogen-activated signal transduction in mammalian cells. The encoded protein shares significant similarity with Arabidopsis FUS6, which is a regulator of light-mediated signal transduction in plant cells. [provided by RefSeq, Mar 2016]
<b>Protein Families:</b>	Druggable Genome

**Product images:**

Coomassie blue staining of purified GPS1 protein (Cat# TP309147). The protein was produced from HEK293T cells transfected with GPS1 cDNA clone (Cat# [RC209147]) using MegaTran 2.0 (Cat# [TT210002]).