

## Product datasheet for **TP309144**

### PRPF40B (NM\_001031698) Human Recombinant Protein

#### Product data:

Product Type:	Recombinant Proteins
Description:	Recombinant protein of human PRP40 pre-mRNA processing factor 40 homolog B ( <i>S. cerevisiae</i> ) (PRPF40B), transcript variant 1, 20 µg
Species:	Human
Expression Host:	HEK293T
Expression cDNA Clone or AA Sequence:	>RC209144 protein sequence <b>Red</b> =Cloning site <b>Green</b> =Tags(s)

MMPPPFMPPPGIPPPFPMGLPPMSQRPPAIPPMPPGILPPMLPPMGAPPPLTQIPGMVPPMMPGMLMPA  
VPVTAATAPGADTASSAVAGTGPPRALWSEHVAPDGRIYYNADDKQSVWEKPSVLKSKAELLSQCPWK  
EYKSDTGKPYYYNNQSKESRWTRPKDLDLEVLVKQEAAGKQQQLPQTLQPQPQPDPVPPGPTP  
VPTGELLEPEGGSEDCDVLEATQPLEQGFLQQLLEEGPSSSGQHQPQQEEEEESKPEPERSGLSWSNREKAK  
QAFKELLRDKAVPSNASWEQAMKMVTDPRYSALPKLSEKKQAFNAYKAQREKEEKEEARLRAKEAKQTL  
QHFLEQHERMTSTTRYRAEQTFGELEVWAVPERDRKEVYDDVLFLLAKKEKEQAKQLRRRNIQALKSI  
LDGMSSVNFQTTWSQAQQYLMDNPSFAQDHQLQNMDKEDALICFEEHIRALEREERERARLRERRRQQ  
RKNREAFQTFLELHETGQLHSMSTWMELYPAVSTDVRFANMLGQPGSTPLDLFKFYVEELKARFHDEKK  
IIKDILKDRGFCVEVNTAFEDFAHVISFDKRAAALDAGNIKLTFNLSLLEKAEAREREREKEEARRMRRE  
AAFRSMLRQAVPALELGTAWEEVRERFVCDSAFEQITLESERIRLFREFLQVLEQTECQHLHTKGRKHGR  
KGKHHHHRSHSPSGSESEEEELPPPSLRPPKRRRRNPSESGSEPSSSLDSVESGGGALGGRGSPSSHLL  
GADHGLRKAKKPKKTKRRRHKSNSPESETDPEEKAGKESDEKEQEQDKDRELQQAELPNRSPGFGIKKE  
KTGWDTSESELSEGELEERRRRTLLQLDDHQ

**TRTRPLEQKLISEEDLAANDILDYKDDDDKV**

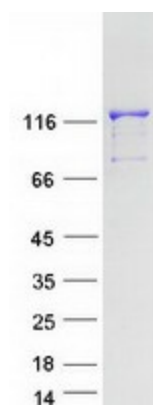
Tag:	C-Myc/DDK
Predicted MW:	99.2 kDa
Concentration:	>0.05 µg/µL as determined by microplate BCA method
Purity:	> 80% as determined by SDS-PAGE and Coomassie blue staining
Buffer:	25 mM Tris-HCl, 100 mM glycine, pH 7.3, 10% glycerol
Preparation:	Recombinant protein was captured through anti-DDK affinity column followed by conventional chromatography steps.



[View online »](#)

<b>Note:</b>	For testing in cell culture applications, please filter before use. Note that you may experience some loss of protein during the filtration process.
<b>Storage:</b>	Store at -80°C.
<b>Stability:</b>	Stable for 12 months from the date of receipt of the product under proper storage and handling conditions. Avoid repeated freeze-thaw cycles.
<b>RefSeq:</b>	<a href="#">NP_001026868</a>
<b>Locus ID:</b>	25766
<b>UniProt ID:</b>	<a href="#">Q6NWX9</a> , <a href="#">F8VU11</a>
<b>RefSeq Size:</b>	3350
<b>Cytogenetics:</b>	12q13.12
<b>RefSeq ORF:</b>	2613
<b>Synonyms:</b>	HYPC
<b>Summary:</b>	This gene encodes a WW-domain containing protein similar to yeast splicing factor PRP40. This protein has been shown to interact with Huntingtin and methyl CpG binding protein 2 (MeCP2). Alternative splicing results in different transcript variants. [provided by RefSeq, Aug 2014]
<b>Protein Pathways:</b>	Spliceosome

### Product images:



Coomassie blue staining of purified PRPF40B protein (Cat# TP309144). The protein was produced from HEK293T cells transfected with PRPF40B cDNA clone (Cat# [RC209144]) using MegaTran 2.0 (Cat# [TT210002]).