

Product datasheet for **TP309138M**

CAF1 (CHAF1A) (NM_005483) Human Recombinant Protein

Product data:

Product Type:	Recombinant Proteins
Description:	Recombinant protein of human chromatin assembly factor 1, subunit A (p150) (CHAF1A), 100 µg
Species:	Human
Expression Host:	HEK293T
Expression cDNA Clone or AA Sequence:	>RC209138 protein sequence Red =Cloning site Green =Tags(s)

MLEEECGAPGARGAATAMDCKDRPAPFPVKLIQARLPFKRLNLVPKGADDMSDDQGTSVQSKSPDLEA
SLDTLENNCHVGSIDIDFRPKLVNGKGPLDNFLRNRIETSIGQSTVIIDLTEDSNEQPDSLVDHNKLNSEA
SPSREAINQREDTGDQQGLLKAIQNDKLAFFGETLSDIPCKTEEEGVGCGGAGRRGDSQECSPRSCPEL
TSGPRMCPRKEQDSWSEAGGILFKGKVPMMVLQDILAVRPPQIKSLPATPQGKNMTPESVLESFPEEDS
VLSHSSLSSPSTSSPEGPPAPPKQHSSTSPFPSTPLRRITKKFKVKGSTENKLRQLRQDQERLGKQLKL
RAEREEKEKLKEEAKRAKEEAKKKKEEELKEKERREKREKDEKEKAQRLKEERRKERQEALAKLE
EKRKKEEERLREEEKRIKAEKAEITRFFQPKTPQAPKTLAGSCGKFAPFEIKEHMLAPRRRTAFHPD
LCSQLDQLLQQQSGEFSFLKDLKGRQPLRSGPTHVSTRNADIFNSDVVIVERGKGDGVPERRKFGRMKLL
QFCENHRPAYWGTWNKKTALIRARDPWAQDTKLLDYEVDSDEEWEEEPGESLSHSEGGDDDDDMGEDEDE
DDGFFVPHGYLSEDEGVTEECADPENHKVRQKLKAKEWDEFLAKGKRFRVLQPVKIGCVWAADRDCAGDD
LKVLLQFAACFLETLPAAQEEQTPKASKRERRDEQILAQLLPLHGNVNGSKVIREFQEHCRRLSNHT
GSPRSPSTTYLHTPTSEDAAIPSKSRLKRLISENSVYEKRPDFRMCWYVHPQVLSFQQEHLVPVCQWS
YVTSVPSAPKEDSGSVPSTGSPSQGTPISLKRKSAGSMCITQFMKKRRHDGQIGAEDMDGFQADTEEEEE
EGDCMIVDVPDAAEVQAPCGAASGAGGGVGVDTGKATLTASPLGAS

TRTRPLEQKLISEEDLAANDILDYKDDDDKV

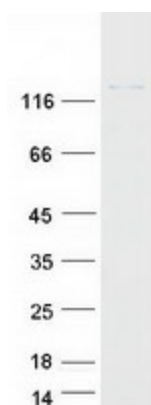
Tag:	C-Myc/DDK
Predicted MW:	106.7 kDa
Concentration:	>0.05 µg/µL as determined by microplate BCA method
Purity:	> 80% as determined by SDS-PAGE and Coomassie blue staining
Buffer:	25 mM Tris-HCl, 100 mM glycine, pH 7.3, 10% glycerol
Preparation:	Recombinant protein was captured through anti-DDK affinity column followed by conventional chromatography steps.



[View online »](#)

Note:	For testing in cell culture applications, please filter before use. Note that you may experience some loss of protein during the filtration process.
Storage:	Store at -80°C.
Stability:	Stable for 12 months from the date of receipt of the product under proper storage and handling conditions. Avoid repeated freeze-thaw cycles.
RefSeq:	NP_005474
Locus ID:	10036
UniProt ID:	Q13111
RefSeq Size:	3344
Cytogenetics:	19p13.3
RefSeq ORF:	2868
Synonyms:	CAF-1; CAF1; CAF1B; CAF1P150; P150
Summary:	Chromatin assembly factor I (CAF1) is a nuclear complex consisting of p50, p60 (CHAF1B; MIM 601245), and p150 (CHAF1A) subunits that assembles histone octamers onto replicating DNA in vitro (Kaufman et al., 1995 [PubMed 7600578]).[supplied by OMIM, Mar 2008]
Protein Families:	Stem cell - Pluripotency, Transcription Factors

Product images:



Coomassie blue staining of purified CHAF1A protein (Cat# [TP309138]). The protein was produced from HEK293T cells transfected with CHAF1A cDNA clone (Cat# [RC209138]) using MegaTran 2.0 (Cat# [TT210002]).