

## Product datasheet for TP309138L

### CAF1 (CHAF1A) (NM\_005483) Human Recombinant Protein

#### Product data:

**Product Type:** Recombinant Proteins  
**Description:** Recombinant protein of human chromatin assembly factor 1, subunit A (p150) (CHAF1A), 1 mg  
**Species:** Human  
**Expression Host:** HEK293T  
**Expression cDNA Clone or AA Sequence:** >RC209138 protein sequence  
 Red=Cloning site Green=Tags(s)

MLEEECGAPGARGAATAMDCKDRPAPFPVKLIQARLPFKRLNLVPKGADDMSDDQGTSVQSKSPDLEA  
 SLDTLENNCHVGSIDIDFRPKLVNGKGPLDNFLRNRIETSIGQSTVIIDLTEDSNEQPDSLVDHKNLNSEA  
 SPSREAINQREDTGDQQGLLKAIQNDKLAFFGETLSDIPCKTEEEGVGCGGAGRRGDSQECSPRSCPEL  
 TSGPRMCPRKEQDSWSEAGGILFKGKVPMMVLQDILAVRPPQIKSLPATPQGKNMTPSEVLESFPEEDS  
 VLSHSSLSSPSTSSPEGPPAPPKQHSSTSPFPSTPLRRITKKFKVKGSTENKLRQLRQDQERLGKQLKL  
 RAEREEKEKLKEEAKRAKEEAKKKKEEELKEKERREKREKDEKEKAQRLKEERRKERQEALAKLE  
 EKRKKEEELRLEEKRIKAEKAEITRFFQPKTPQAPKTLAGSCGKFAPFEIHEHMLAPRRRTAFHPD  
 LCSQLDQLLQQSGEFSFLKDLKGRQPLRSGPTHVSTRNADIFNSDVVIVERGKGDGVPERRKFRMKLL  
 QFCENHRPAYWGTWNKKTALIRARDPWAQDTKLLDYEVDSDEEWEEEPGESLSHSEGGDDDDDMGEDEDE  
 DDGFFVPHGYLSEDEGVTEECADPENHKVRQKLKAKEWDEFLAKGKRFRVLQPVKIGCVWAADRDCAGDD  
 LKVLQQFAACFLETLPAAQEEQTPKASKRERRDEQILAQLLPLLHGNVNGSKVIREFQEHCRRLSNHT  
 GSRRSPSTTYLHTPTSEDAAIPSKSRLKRLISENSVYEKRPDFRMCWYVHPQVLQSFQQEHLVPVCQWS  
 YVTSVPSAPKEDSGSVPSTGSPGQTPISLKRKSAGSMCITQFMKKRRHDGQIGAEDMDGFQADTEEEEE  
 EGDCMIVDVPDAAEVQAPCGAASGAGGGVGVDTGKATLTASPLGAS

TRTRPLEQKLISEEDLAANDILDYKDDDDKV

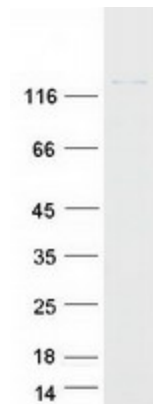
**Tag:** C-Myc/DDK  
**Predicted MW:** 106.7 kDa  
**Concentration:** >0.05 µg/µL as determined by microplate BCA method  
**Purity:** > 80% as determined by SDS-PAGE and Coomassie blue staining  
**Buffer:** 25 mM Tris-HCl, 100 mM glycine, pH 7.3, 10% glycerol  
**Preparation:** Recombinant protein was captured through anti-DDK affinity column followed by conventional chromatography steps.



[View online »](#)

<b>Note:</b>	For testing in cell culture applications, please filter before use. Note that you may experience some loss of protein during the filtration process.
<b>Storage:</b>	Store at -80°C.
<b>Stability:</b>	Stable for 12 months from the date of receipt of the product under proper storage and handling conditions. Avoid repeated freeze-thaw cycles.
<b>RefSeq:</b>	<a href="#">NP_005474</a>
<b>Locus ID:</b>	10036
<b>UniProt ID:</b>	<a href="#">Q13111</a>
<b>RefSeq Size:</b>	3344
<b>Cytogenetics:</b>	19p13.3
<b>RefSeq ORF:</b>	2868
<b>Synonyms:</b>	CAF-1; CAF1; CAF1B; CAF1P150; P150
<b>Summary:</b>	Chromatin assembly factor I (CAF1) is a nuclear complex consisting of p50, p60 (CHAF1B; MIM 601245), and p150 (CHAF1A) subunits that assembles histone octamers onto replicating DNA in vitro (Kaufman et al., 1995 [PubMed 7600578]).[supplied by OMIM, Mar 2008]
<b>Protein Families:</b>	Stem cell - Pluripotency, Transcription Factors

### Product images:



Coomassie blue staining of purified CHAF1A protein (Cat# [TP309138]). The protein was produced from HEK293T cells transfected with CHAF1A cDNA clone (Cat# [RC209138]) using MegaTran 2.0 (Cat# [TT210002]).