

Product datasheet for **TP309137M**

GRK5 (NM_005308) Human Recombinant Protein

Product data:

Product Type: Recombinant Proteins

Description: Recombinant protein of human G protein-coupled receptor kinase 5 (GRK5), 100 µg

Species: Human

Expression Host: HEK293T

Expression cDNA Clone or AA Sequence: >RC209137 protein sequence
Red=Cloning site **Green**=Tags(s)

MELENIVANTVLLKAREGGGKRGKSKKWKEILKFPHISQCEDLRRTIDRDYCSLCKDKQPIGRLLFRQF
CETRPGLECYIQFLDSVAEYVTPDEKLGEKGKEIMTKYLTPKSPVFIAQVQGDLVSQTEKLLQKPCKE
LFSACAQSVHEYLRGEPFHEYLD SMFFDRFLQWKWLERQPVTKNTRQYRVLGKGGFGEVCACQVRATGK
MYACKRLEKKRIKKRKGESMALNEKQILEKVNSQFVNLAYAYETKDALCLVLTIMNGGDLKFHIYNMGN
PGFEEERALFYAAEILCGLEDLHRENTVYRDLKPENILLDDYGHIRISDLGLAVKIPEGLIRGRVGTVG
YMAPEVLNNQRYGLSPDYWGLGCLYEMIEGQSPFRGRKEKVKREEVDRRVLTEEVYSHKFSEEAKSIC
KMLLTKDAKQRLGCGEEGAAEVKRHPFFRNMFKRLEAGMLDPPFVPDPRAVYCKDVLIDIEQFSTVKGMN
LDHTDDDFYSKFSTGSVIPWQNEMIETECFKELNVFGPNGTLPPDLNRNHPPEPPKGLLQRLFKRQH
NNSKSSPSKTSFNHHINSNHVSSNSTGSS

TRTRPLEQKLISEEDLAANDILDYKDDDDKV

Tag: C-Myc/DDK

Predicted MW: 67.6 kDa

Concentration: >0.05 µg/µL as determined by microplate BCA method

Purity: > 80% as determined by SDS-PAGE and Coomassie blue staining

Buffer: 25 mM Tris-HCl, 100 mM glycine, pH 7.3, 10% glycerol

Preparation: Recombinant protein was captured through anti-DDK affinity column followed by conventional chromatography steps.

Note: For testing in cell culture applications, please filter before use. Note that you may experience some loss of protein during the filtration process.

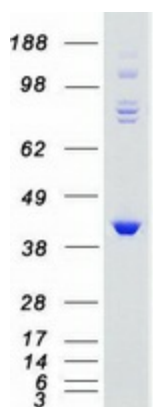
Storage: Store at -80°C.



[View online >](#)

Stability:	Stable for 12 months from the date of receipt of the product under proper storage and handling conditions. Avoid repeated freeze-thaw cycles.
RefSeq:	NP_005299
Locus ID:	2869
UniProt ID:	P34947
RefSeq Size:	2575
Cytogenetics:	10q26.11
RefSeq ORF:	1770
Synonyms:	FP2025; GPRK5
Summary:	This gene encodes a member of the guanine nucleotide-binding protein (G protein)-coupled receptor kinase subfamily of the Ser/Thr protein kinase family. The protein phosphorylates the activated forms of G protein-coupled receptors thus initiating their deactivation. It has also been shown to play a role in regulating the motility of polymorphonuclear leukocytes (PMNs). [provided by RefSeq, Jul 2008]
Protein Families:	Druggable Genome, Protein Kinase
Protein Pathways:	Chemokine signaling pathway, Endocytosis

Product images:



Coomassie blue staining of purified GRK5 protein (Cat# [TP309137]). The protein was produced from HEK293T cells transfected with GRK5 cDNA clone (Cat# [RC209137]) using MegaTran 2.0 (Cat# [TT210002]).