

Product datasheet for **TP309135M**

SERGEF (NM_012139) Human Recombinant Protein

Product data:

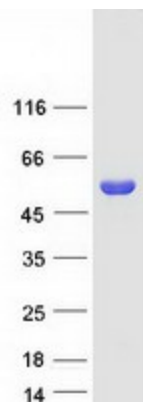
| | |
|---------------------------------------|---|
| Product Type: | Recombinant Proteins |
| Description: | Recombinant protein of human secretion regulating guanine nucleotide exchange factor (SERGEF), 100 µg |
| Species: | Human |
| Expression Host: | HEK293T |
| Expression cDNA Clone or AA Sequence: | >RC209135 protein sequence Red =Cloning site Green =Tags(s) |
| | <p>MEREPSASEAAPAAAAALFAWGANSYGQLGLGHKEDVLLPQQLNDFCKPRSVRRITGGGGHSAVTDGGD L FVCGLNKDQGQLGLGHTEDIPYFTPCKSLFGCPIQQVACGWDFTIMLTENGQVLSCGSNSFGQLGVPHGP R RCVVPQAIELHKEKVVCIAAGLRHAVAATASGIVFQWGTGLASCGRRRLCPGQTLPLFFTAKEPSRVTGLE NSKAMCVLAGSDHSASLTDAGEVYVWGSNKHGQLANEAAFLPVPQKIEAHCFQNEKVTAIWSGWTHLV AQ TETGKMFTWGRADYGQLGRKLETYEGWKLEKQDSFLPCSRPPNSMPSSPHCLTGATEVSCGSEHNLAIG GVCYSWGWNEHGMCGDGTEANVWAPKPVQALLSSSGLLVGCGAGHSLALCQLPAHPALVQDPKVITYLS PD AIEDTESQKAMDKERNWKERQSETSTQSQSDWSRNGGL</p> <p>TRTRPLEQKLISEEDLAANDILDYKDDDDKV</p> |
| Tag: | C-Myc/DDK |
| Predicted MW: | 48.8 kDa |
| Concentration: | >0.05 µg/µL as determined by microplate BCA method |
| Purity: | > 80% as determined by SDS-PAGE and Coomassie blue staining |
| Buffer: | 25 mM Tris-HCl, 100 mM glycine, pH 7.3, 10% glycerol |
| Preparation: | Recombinant protein was captured through anti-DDK affinity column followed by conventional chromatography steps. |
| Note: | For testing in cell culture applications, please filter before use. Note that you may experience some loss of protein during the filtration process. |



[View online »](#)

| | |
|----------------------|---|
| Storage: | Store at -80°C. |
| Stability: | Stable for 12 months from the date of receipt of the product under proper storage and handling conditions. Avoid repeated freeze-thaw cycles. |
| RefSeq: | NP_036271 |
| Locus ID: | 26297 |
| UniProt ID: | Q9UGK8 |
| RefSeq Size: | 1582 |
| Cytogenetics: | 11p15.1 |
| RefSeq ORF: | 1374 |
| Synonyms: | DELGEF; Gnefr |
| Summary: | Probable guanine nucleotide exchange factor (GEF), which may be involved in the secretion process.[UniProtKB/Swiss-Prot Function] |

Product images:



Coomassie blue staining of purified SERGEF protein (Cat# [TP309135]). The protein was produced from HEK293T cells transfected with SERGEF cDNA clone (Cat# [RC209135]) using MegaTran 2.0 (Cat# [TT210002]).