

## Product datasheet for **TP309135L**

### **SERGEF (NM\_012139) Human Recombinant Protein**

#### Product data:

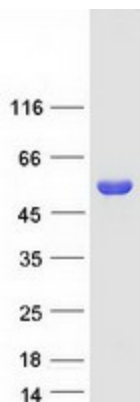
Product Type:	Recombinant Proteins
Description:	Recombinant protein of human secretion regulating guanine nucleotide exchange factor (SERGEF), 1 mg
Species:	Human
Expression Host:	HEK293T
Expression cDNA Clone or AA Sequence:	>RC209135 protein sequence <b>Red</b> =Cloning site <b>Green</b> =Tags(s)
	<p>MEREPSASEAAPAAAAALFAWGANSYGQLGLGHKEDVLLPQQLNDFCKPRSVRRITGGGGHSAVTDGGD L FVCGLNKDGQLGLGHTEDIPYFTPCKSLFGCPIQQVACGWDFTIMLTENGQVLSCGSNSFGQLGVPHGP R RCVVPQAIELHKEKVVCIAAGLRHAVAATASGIVFQWGTGLASCGRRRLCPGQTLPLFFTAKEPSRVTGLE NSKAMCVLAGSDHSASLTDAGEVYVWGSNKHGQLANEAAFLPVPQKIEAHCFQNEKVTAIWSGWTHLV AQ TETGKMFTWGRADYQQLGRKLETYEGWKLEKQDSFLPCSRPPNSMPSSPHCLTGATEVSCGSEHNLAIG GVCYSWGWNEHGMCGDGTEANVWAPKPVQALLSSSGLLVGCGAGHSLALCQLPAHPALVQDPKVLYLS PD AIEDTESQKAMDKERNWKERQSETSTQSQSDWSRNGGL</p> <p><b>TRTRPLEQKLISEEDLAANDILDYKDDDDKV</b></p>
Tag:	C-Myc/DDK
Predicted MW:	48.8 kDa
Concentration:	>0.05 µg/µL as determined by microplate BCA method
Purity:	> 80% as determined by SDS-PAGE and Coomassie blue staining
Buffer:	25 mM Tris-HCl, 100 mM glycine, pH 7.3, 10% glycerol
Preparation:	Recombinant protein was captured through anti-DDK affinity column followed by conventional chromatography steps.
Note:	For testing in cell culture applications, please filter before use. Note that you may experience some loss of protein during the filtration process.



[View online »](#)

<b>Storage:</b>	Store at -80°C.
<b>Stability:</b>	Stable for 12 months from the date of receipt of the product under proper storage and handling conditions. Avoid repeated freeze-thaw cycles.
<b>RefSeq:</b>	<a href="#">NP_036271</a>
<b>Locus ID:</b>	26297
<b>UniProt ID:</b>	<a href="#">Q9UGK8</a>
<b>RefSeq Size:</b>	1582
<b>Cytogenetics:</b>	11p15.1
<b>RefSeq ORF:</b>	1374
<b>Synonyms:</b>	DELGEF; Gnefr
<b>Summary:</b>	Probable guanine nucleotide exchange factor (GEF), which may be involved in the secretion process.[UniProtKB/Swiss-Prot Function]

### Product images:



Coomassie blue staining of purified SERGEF protein (Cat# [TP309135]). The protein was produced from HEK293T cells transfected with SERGEF cDNA clone (Cat# [RC209135]) using MegaTran 2.0 (Cat# [TT210002]).