

## Product datasheet for **TP309133M**

### BCAR1 (NM\_014567) Human Recombinant Protein

#### Product data:

**Product Type:** Recombinant Proteins  
**Description:** Recombinant protein of human breast cancer anti-estrogen resistance 1 (BCAR1), 100 µg  
**Species:** Human  
**Expression Host:** HEK293T  
**Expression cDNA Clone or AA Sequence:** >RC209133 protein sequence  
Red=Cloning site Green=Tags(s)

MNHLNVLAKALYDNVAESPDELSFRKGDIMTVLEQDTQGLDGGWLC SLHGRRQGIVPGRNLKILVGM YDKK  
PAGPGSGPPATPAQPQGLHAPAPPASQYTPMLPNTYQPQPDSVYLVPTPSKAQQGLYQVPGPSPQFQSP  
PAKQTSTFSKQTPHHFPNPATDLYQVPPGGGPAQDIYQVPPSAGMGHDYQVPPSMDTRSWEGTKPPA  
KVVVPTRVGGQGYVEAAQPEQDEYDIPRHLLAPGPQDIYVPPVRG LLPSQYGQEVYDTPPMAVKGPNGR  
DPLLEVYDVPPSVEKGLPPSNHHAVYDVPPSVSKDVPDGPLLREETYDVPPAFAKAKPFPDARTPLVLAA  
PPPDSPPAEDVYDVPPPAPDLYDVPPGLRRPGTLYDVPRERVL PPEVADGGVDSGVYAVPPPAAREA  
PAEGKRLSASSTGSTRSSQSASSLEVAGPGREPLELEVAVEALARLQQGVSATVAHLLDLAGSAGATGSW  
RSPSEPQEPLVQDLQAAVAVQSAVHELLEFARSAGVNAHTSDRALHAKLSRQLQKMEDVHQT LVAHGQ  
ALDAGRGGSGATLEDLRLVACSRAPVEDAKQLASFLHGNASLLFRRTKATAPGPEGGTLHPNPTDKTS  
SIQSRPLPSPPKFTSQDSPDGGYENSEGGWMEDYDVHLLQ GKKEEFKTQKELLEKGSITRQGKSQLELQQ  
LKQFERLEQEVSRPIDHDLANWTPAQPLAPGRTGGLGPSDRQLLLFYLEQCEANLTTLNAVDAFFTAVA  
TNQPPKIFVAHSKFVILSAHKL VFIGDTLSRQAKAADVRSQVTHYSNLLCDLLRGIVATTKAAALQYPS  
SAAQDMVERVKELGHSTQQFRRVLGQLAAA

TRTRPLEQKLISEEDLAANDILDYKDDDDKV

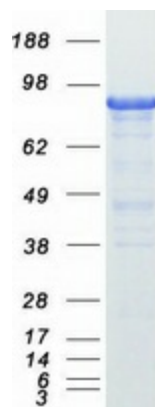
**Tag:** C-Myc/DDK  
**Predicted MW:** 93.2 kDa  
**Concentration:** >0.05 µg/µL as determined by microplate BCA method  
**Purity:** > 80% as determined by SDS-PAGE and Coomassie blue staining  
**Buffer:** 25 mM Tris-HCl, 100 mM glycine, pH 7.3, 10% glycerol  
**Preparation:** Recombinant protein was captured through anti-DDK affinity column followed by conventional chromatography steps.



[View online »](#)

<b>Note:</b>	For testing in cell culture applications, please filter before use. Note that you may experience some loss of protein during the filtration process.
<b>Storage:</b>	Store at -80°C.
<b>Stability:</b>	Stable for 12 months from the date of receipt of the product under proper storage and handling conditions. Avoid repeated freeze-thaw cycles.
<b>RefSeq:</b>	<a href="#">NP_055382</a>
<b>Locus ID:</b>	9564
<b>UniProt ID:</b>	<a href="#">P56945</a>
<b>RefSeq Size:</b>	3257
<b>Cytogenetics:</b>	16q23.1
<b>RefSeq ORF:</b>	2610
<b>Synonyms:</b>	CAS; CAS1; CASS1; CRKAS; P130Cas
<b>Summary:</b>	The protein encoded by this gene is a member of the Crk-associated substrate (CAS) family of scaffold proteins, characterized by the presence of multiple protein-protein interaction domains and many serine and tyrosine phosphorylation sites. The encoded protein contains a Src-homology 3 (SH3) domain, a proline-rich domain, a substrate domain which contains 15 repeat of the YxxP consensus phosphorylation motif for Src family kinases, a serine-rich domain, and a bipartite Src-binding domain, which can bind both SH2 and SH3 domains. This adaptor protein functions in multiple cellular pathways, including in cell motility, apoptosis and cell cycle control. Dysregulation of this gene can have a wide range of effects, affecting different pathways, including cardiac development, vascular smooth muscle cells, liver and kidney function, endothelial migration, and cancer. [provided by RefSeq, Sep 2017]
<b>Protein Families:</b>	Druggable Genome
<b>Protein Pathways:</b>	Chemokine signaling pathway, Focal adhesion, Leukocyte transendothelial migration, Regulation of actin cytoskeleton

### Product images:



Coomassie blue staining of purified BCAR1 protein (Cat# [TP309133]). The protein was produced from HEK293T cells transfected with BCAR1 cDNA clone (Cat# [RC209133]) using MegaTran 2.0 (Cat# [TT210002]).