

## Product datasheet for **TP309131M**

### **RBM35A (ESRP1) (NM\_017697) Human Recombinant Protein**

#### Product data:

Product Type:	Recombinant Proteins
Description:	Recombinant protein of human epithelial splicing regulatory protein 1 (ESRP1), transcript variant 1, 100 µg
Species:	Human
Expression Host:	HEK293T
Expression cDNA Clone or AA Sequence:	>RC209131 protein sequence <b>Red</b> =Cloning site <b>Green</b> =Tags(s)

MTASPDYLVVLFGITAGATGAKLGSDEKELILLFWKVDLANKKVGQLHEVLVLRPDQLELTEDCKEETKI  
DVESLSSASQLDQALRQFNQSVSNELNIGVGTSFCLCTDGQLHVRQILHPEASKKNVLLPECFYSFFDLR  
KEFKKCCPGSPDIDKLDVATMTEYLNFEKSSSVRYGASQVEDMGNILAMISEPYNHRFSDPERVNYKF  
ESGTCSELMELIDDNTVVRARGLPWQSSDQDIARFFKGLNIAKGGAAALCLNAQGRRNGEALVRFVSEEHDR  
LALQRHKHHMGTRYIEVYKATGEDFLKIAGGTSNEVAQFLSKENQVIVRMRGLPFTATAEEVVAFFGQHC  
PITGGKEGILFVTYPDGRPTGDAFVLFACEEYAQNALRKHKDLLGKRYIELFRSTAAEVQQLNRFSSAP  
LIPLTPPIIPVLPQQFVPPTNVRDCIRLRGLPYAATIEDILDFLGEFATDIRTHGVHMLNHQGRPSGD  
AFIQMKSADRAFMAAQKCHKKNMKDRYVEVFQCSAEEMNFVLMGGTLNRNGLSPPPCKLPCLSPPSYTFP  
APAAVPTAAIYQPSVILNPRALQPSTAYYPAGTQLFMNYTAYYPSPPGSPNSLGYFPTAANLSGVPPQ  
PGTVVRMQGLAYNTGVKEILNFFQGYQYATEDGLIHTNDQARTLPKEWVCI

**TRTRPLEQKLISEEDLAANDILDYKDDDDKV**

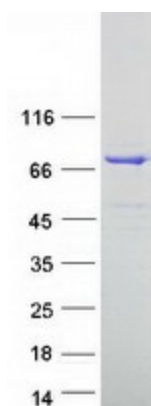
Tag:	C-Myc/DDK
Predicted MW:	75.4 kDa
Concentration:	>0.05 µg/µL as determined by microplate BCA method
Purity:	> 80% as determined by SDS-PAGE and Coomassie blue staining
Buffer:	25 mM Tris-HCl, 100 mM glycine, pH 7.3, 10% glycerol
Preparation:	Recombinant protein was captured through anti-DDK affinity column followed by conventional chromatography steps.
Note:	For testing in cell culture applications, please filter before use. Note that you may experience some loss of protein during the filtration process.
Storage:	Store at -80°C.



[View online »](#)

Stability:	Stable for 12 months from the date of receipt of the product under proper storage and handling conditions. Avoid repeated freeze-thaw cycles.
RefSeq:	<a href="#">NP_060167</a>
Locus ID:	54845
UniProt ID:	<a href="#">Q6NXG1</a>
RefSeq Size:	3806
Cytogenetics:	8q22.1
RefSeq ORF:	2043
Synonyms:	DFNB109; RBM35A; RMB35A
Summary:	ESRP1 is an epithelial cell-type-specific splicing regulator (Warzecha et al., 2009 [PubMed 19285943]).[supplied by OMIM, Aug 2009]

### Product images:



Coomassie blue staining of purified ESRP1 protein (Cat# [TP309131]). The protein was produced from HEK293T cells transfected with ESRP1 cDNA clone (Cat# [RC209131]) using MegaTran 2.0 (Cat# [TT210002]).